

## системы видеонаблюдения

# РУКОВОДСТВО ПОЛЬЗОВАТЕЛЯ

# UXC-1200A



1.	.....	3
2.	.....	3
3.	.....	4
4.	.....	5
5.	, .....	6
6.	.....	7
6.1.	I – ( 1, DVR 1)	7
6.2.	II – ( N, DVR 1)	7
6.3.	III – ( N, DVR N)	8
7.	DVR UVR .....	8
8.	PTZ / DVR .....	9
8.1.	PTZ.....	10
8.2.	DVR .....	10
9.	.....	11



**РИСК УДАРА ЭЛЕКТРИЧЕСКИМ ТОКОМ  
НЕ ОТКРЫВАТЬ**



, ANSI/NFPA 70.

FCC CFR 47

15

B,

A.

**2.**

-

- 
- 
- 
- 
- 
- 
- 

### 3.

- UXC-1200A ( UXC ) . ( -
- “Mouse/ ”:
- ( ,
  - USB .
  - : PTZ –
  - UXC.. : DVR UXC, PTZ -
  - DVR.
  - UXC-1200A

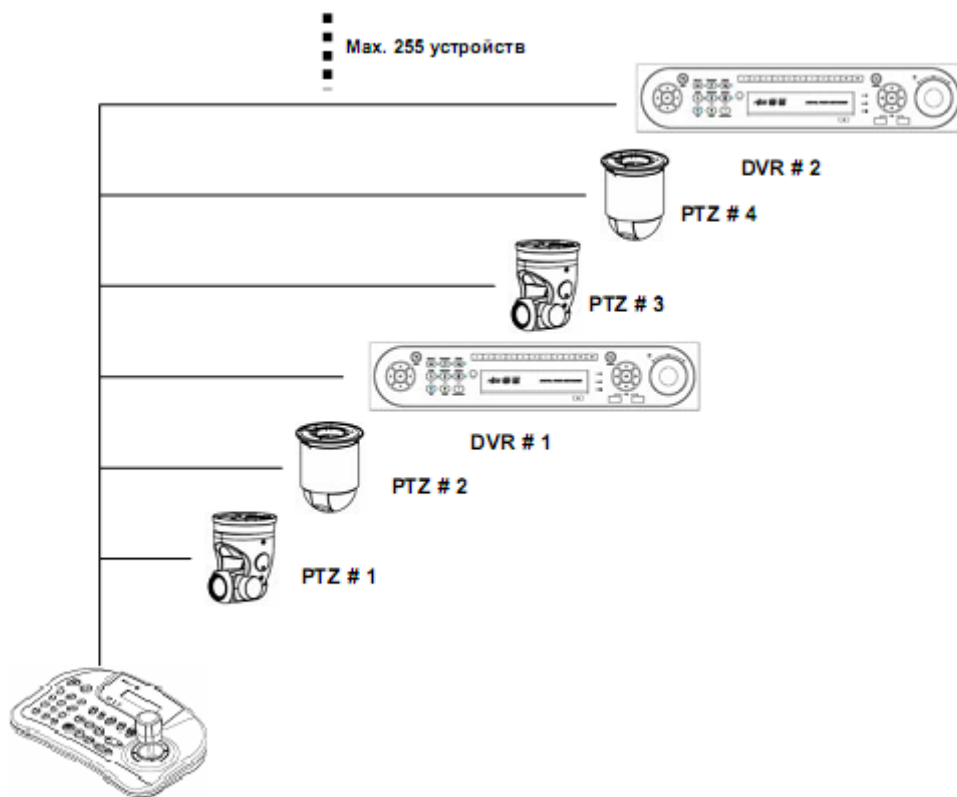
DVR WKEY 9.6K ID : 001

UXC-1200A  
9600 / , ID 1.

- ID - DVR, , .

- , . . ID , ID, DVR, >DEVICES( ) >CAM/PTZ ID, UXC, -

4.

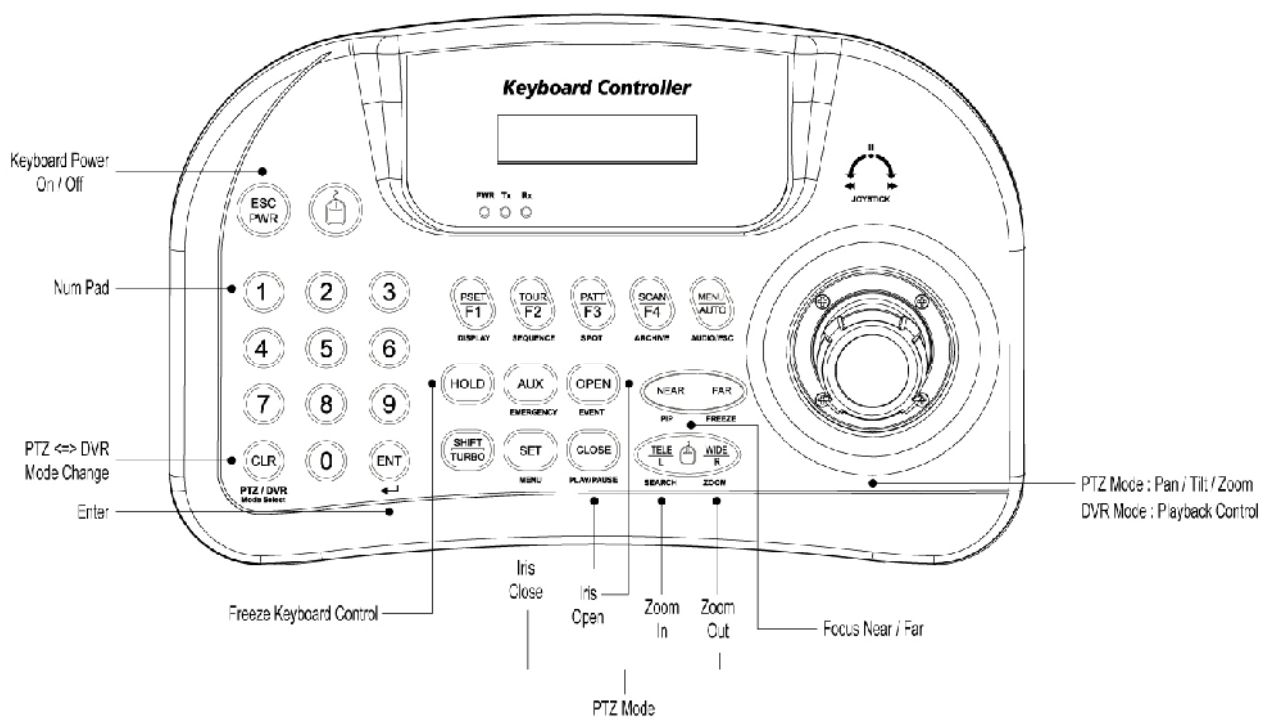


:

- SYSTEM ID: DVR.  
: SYSTEM ID of SETUP>SYSTEM>Information page.
- Camera ID: -  
- ID: SETUP>DEVICES>Cam/PTZ page.  
- ID , ID, DVR: SETUP DEVICES>CAM/PTZ, ID UXC-1200A, .  
• ( -  
)  
-  
• Set ( )

5.

- PTZ -
- DVR  
KBD: (SYSTEM ID) DVR . -
- , + "ENT" ( ) . DVR
- 1 16 . PTZ
- PTZ. ( )  
Camera ID/ ID + "ENT" ( ), -  
ID : 1 255 ID .
- : 8 => 8 "ENT", 16 => 1, 6 "ENT"  
ID 8 => 8 "ENT", ID 255 => 2, 5, 5 "ENT"
- DVR.



6.

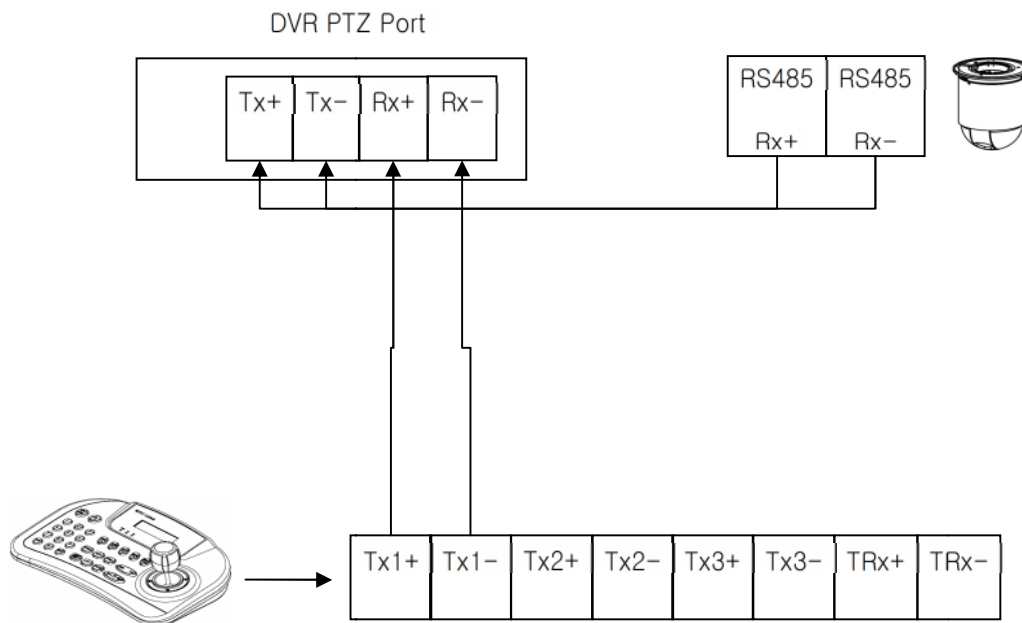
DVR

6.1

I –

(

1, DVR 1)

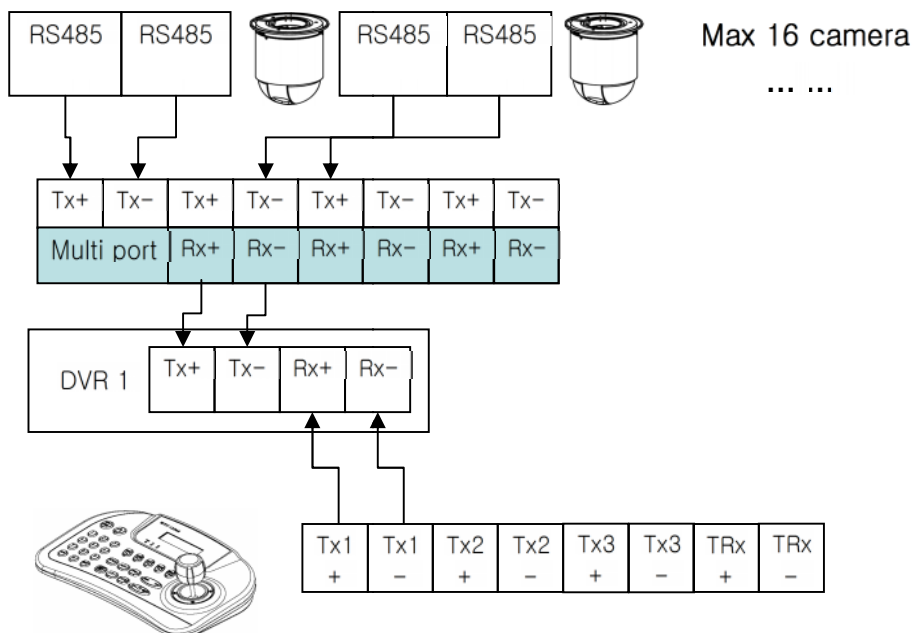


6.2

II –

(

N, DVR 1)

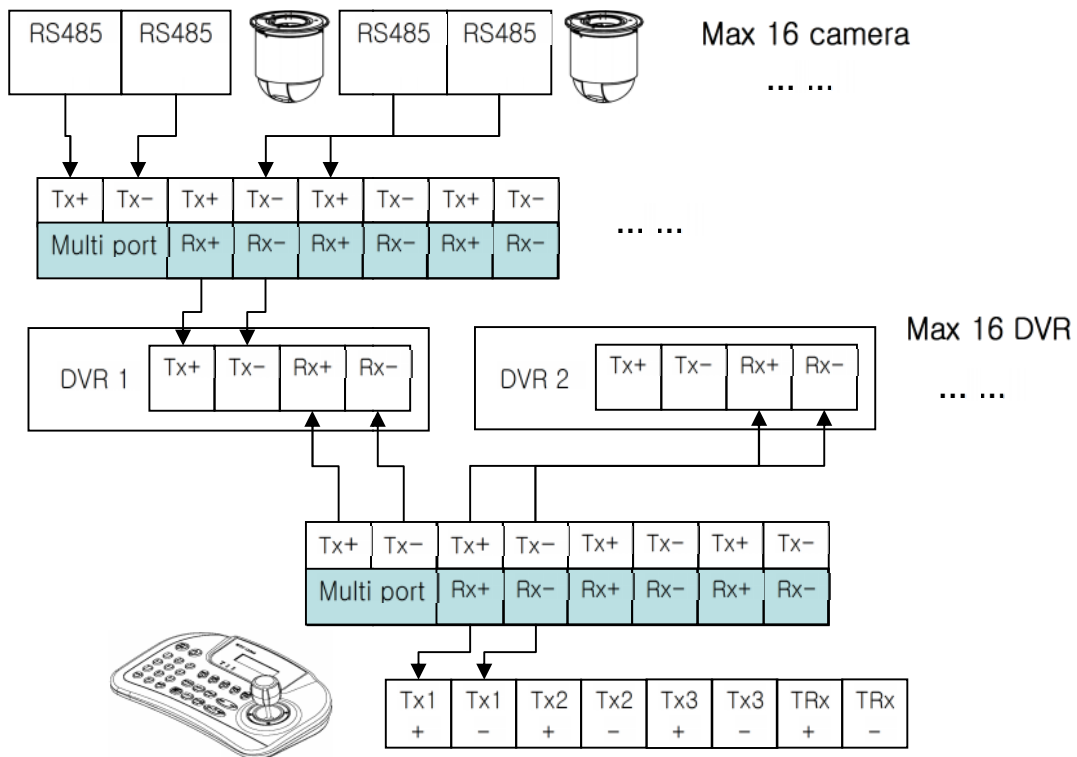


6.3

III –

(

N, DVR N)



7.

DVR

UVR

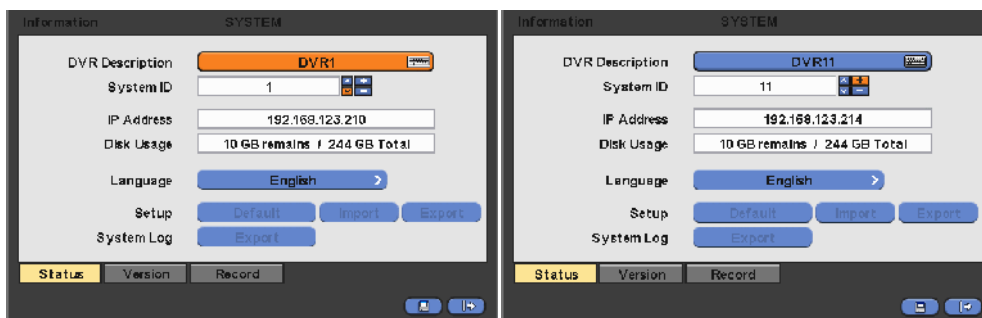
DVR: "Setup>SYSTEM>Information: System ID"

ID

2

DVR,

DVR



"Setup>Device>Camera/PTZ: Keyboard"

CP1200A

PTZ

ID






## 8. PTZ / DVR

RS-485 line. DVR -

- DVR: DVR
- PTZ ( PTZ- ):

DVR:

1. ID DVR.  
(SETUP( ID )>SYSTEM( ID )> INFORMATION( ID ): SYSTEM ID  
( ID ))

2. SYSTEM ID UXC-1200A ( ID : ID: 001, 1 )  
“CLR”  PTZ / DVR  
: “KBD:1”

1. ID DVR control mode /  
DVR.
2. 0 “CLR”,  
PTZ control mode/ PTZ.

DVR, DVR  
(SYSTEM ID DVR) + “ENT”  
DVR. DVR  
PTZ. DVR

SYSTEM ID DVR  
DVR, DVR  
, System ID,  
SYSTEM ID) + “ENT”  
, DVR.

## 8.1. PTZ

PTZ. ID , PTZ. ID , PTZ. 255. : PSET: - + PSET ( ) + PSET Joystick: / , / TELE: WIDE: DVR .

## 8.2. DVR

DVR DVR: - DISPLAY: : 1>4>9>16>1. - SEQ: ./ . - SPOT: , . - ARCHIVE: . Setup. - AUDIO/ESC: AUDIO. ( - ) - EMERGENCY: ./ . - EVENT: . - PIP: / « - - » « - - » , + "ENT". 4 9 , - - FRZ: - SETUP: - PLAY/PAUSE: / -

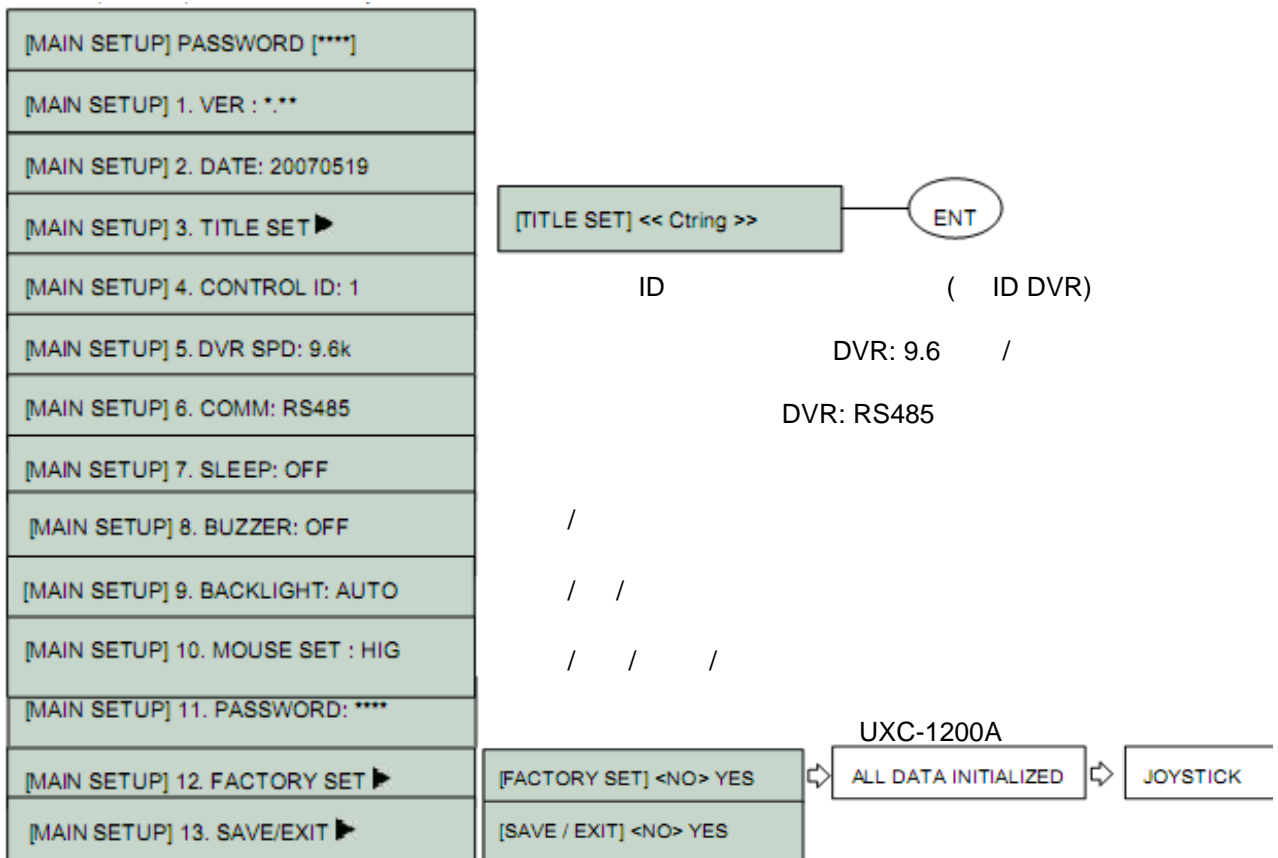
- SEARCH:
- ZOOM:
- JOYSTICK (REW): 2X, 4X, 8X, 16X, 32X, 62X,
- JOYSTICK (FF): 2X, 4X, 8X, 16X, 32X, 62X,
- JOYSTICK (SETUP): -
- ENT: . ( -
- “ENT” ( ). +

9.

2 UXC-1200A + “SET” ( ) , -

. ( Joystick ( ) : ↓ next ( ) , ← , →

change ( ) )



- DVR UXC , 9.6 / .
- UXC PTZ DVR.
- DVR.
- Tx
- Tx ,
- OFFSET .
- YES FACTORY SET UXC .