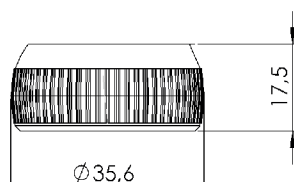


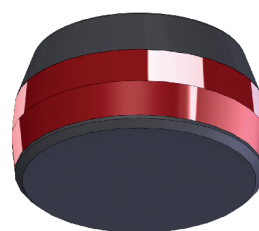
GPP PGS2 Li R/G

**Two aspect colour light signal
designed for a parking sensor
(without a console)**



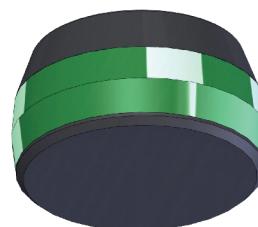
GENERAL CHARACTERISTICS

- a variable light signal designed for common parking spaces
- visual indication of whether a parking space is occupied
- placement of lights above parking spaces (close to the driving aisle)
- high level of visibility even when the system is used in strong artificial light due to the use of light diffusing plastic and large-area LED diodes of high luminous intensity
- a two aspect colour light signal (the green and red colours) used for the indication of different occupancy status of a parking space



STANDARD MEANING OF COLOUR LIGHTS

- *red* – an occupied parking space
- *green* – a vacant parking space



MECHANICAL COMPONENTS

Fixing

- components for the ceiling attachment

Light diffusing and assembly plastic components

- a plastic case with light diffusing fields
- two components:
 - 1 a light diffuser
 - 2 a bottom lid

ELECTRONIC COMPONENTS

Printed circuit

- a board equipped with indication colour LED R/G

TECHNICAL DATA

| | |
|---------------------------------|----------------|
| Technology | LED |
| Material | PMMA + ABS |
| Number of aspect colours | 2 |
| Dimensions | Ø 36 × 17,5 mm |
| Weight | < 0.1 kg |

Modification of construction and technical parameters reserved. Pictures may differ from real products.