

UNEX

системы видеонаблюдения

РУКОВОДСТВО ПОЛЬЗОВАТЕЛЯ

IP-

UIP 9800-MPC



1.		3
2.		3
2.1		3
2.4		6
3		7
3.1	IP	7
3.2	IP	8
3.3	IP	9
3.4	IP	9
4	IP	10
4.1		10
4.2		12
4.3	ACTIVE X	12
5		14
5.1	IP	14
5.2	IP	15
5.3	IP	17
5.4	IP	18
5.5	IP	20
5.6	IP	21
5.8	IP	23
5.9	IP	24
5.10	IP	24
5.11	IP	25
1	IP	26
2		26
3	IP	26
4		30

2.1

IP

H.264
Web
Internet Explorer.

- | | | | |
|----|----------|---|---|
| 1. | IP | 1 | . |
| 2. | | 1 | . |
| 3. | | 1 | . |
| 4. | CD | 1 | . |
| 5. | WiFi () | 1 | . |

2.2

- SoC ARM9 Hisilicon Hi3512
- 2.0 Megapixel Micron CMOS
- H.264 Main Profile@Level 3 HD
- 30 1280 960
- 16
- -
-
- IP , LAN, Internet (ADSL)
- : RTSP, RTP, HTTP, TCP/IP, UDP, SMTP, PPPoE, DDNS, DNS, SNTP, DHCP, FTP, SNMP
- 1 1
-
- :
- RS485/RS232
-
- Ethernet (PoE) –
- WiFi -

2.3

	: 1/3" 1.3 0.01
	: 1/3" 2 1.5
	H.264 Main Profile, MJPEG
	CCD: 1280*720, 640*352, 320*280
	CMOS: 1600*1200, 1280*960, 1280*720, 800*600
	, , , ,
	1-25 /
	32Kbps~16Mbps
	1 BNC

	DC drive
	1 ,
	G.726
	1 , RCA,
	()
PoE	10Base-T/100Base-TX Ethernet
	1 RS485
	SD SD2.0
	PoE, 802.3AF -
	WiFi (IEEE802.11a/b/g/n) -
	3G (CDMA2000/WCDMA/TD-SCDMA) -
	1 / , NO ()) NC()
	1 / , 120 AC 1A/24 DC 1A
	e-mail, -
	-10 ~ +55
	10 ~ 85%
	DC 12 ,1A, PoE
	6
	TCP, UDP, IP, HTTP, FTP, SMTP, DHCP, DNS,ARP, ICMP, POP3, NTP, IPsec, UPNP,RTP,RTCP

2.4

- : Pentium 2.8
- : 528
- : TNT2
- :
- : , 40 G

- : Pentium 2.6
- : 1
- : Nvidia Geforce FX5200 ATI RADEON 7000(9000)
256M <
 >

- Microsoft Windows 2000/XP/2003/Vista/Windows 7

- IE 6.0
- DirectX8.0
- TCP/IP

- Fx5200/5600

7500/8500/9000/9200/9500/9600

845G/865G

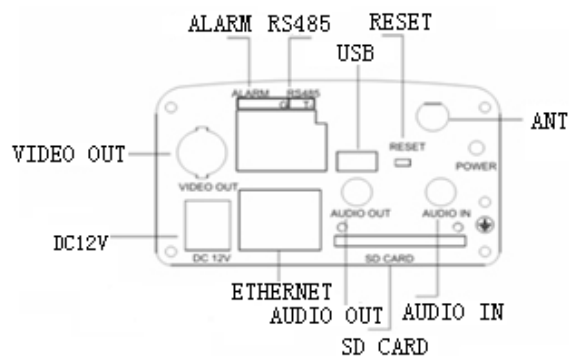
: Nvidia Tnt/Tnt2, Geforce Mx200/400/420/440,

; ATI Radeon7000/7200/

, MatroxG450/550; INTEL

3

3.1 IP



:

ETHERNET: Ethernet

RESET:

DC12V: , DC 12V/1A

AUDIO out:

AUDIO in:

SD CARD: SD

VIDEO OUT:

AUTO IRIS: ,

DC

ANT: WiFi ()

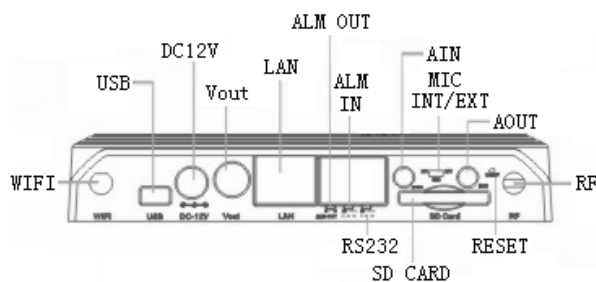
ALARM: , 1 1 – , IN – , G –

RS485: RS485 , – RS485-, – RS485+

USB: USB

3.2

IP



:

WiFi: WiFi ()

USB: USB

DC12V: , DC 12V/1A

Vout:

LAN: Ethernet

ALM OUT: ,

ALM OUT: , IN – , G –

RS232: RS232 , – RS232-, –
RS232+

A in:

A out:

MIC , INT – , EXT –

SD CARD: SD

RESET: ,

RF:

3.3

IP



:

DC12V: , DC 12V/3A

LAN: Ethernet

A in:

A out:

ALM OUT: , () ()

ALM IN: , IN () – , G –

RS485: RS485 , RS485- (), RS485+
()

RESET: ()

3.4

IP

3.4.1

IP

IP

/

/



IP

/

/

1:

IP

2:

IP

(DC 12V)

3:

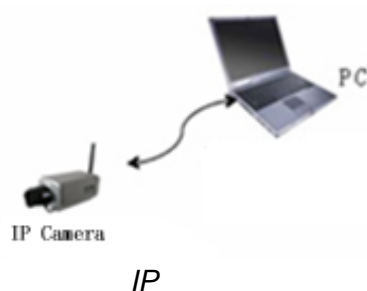
/

/

4: , IP IP IE/

3.4.2 IP

IP , :



5

IP
(: , ,)

4 IP

4.1

SearchNVS (IP ,

➤ A: Search NVS **【tool software】** CD

➤ B: SearchNVS,

【Start】 --- 【all programs】 --- 【NVS Center500】 --- 【Search NVS】

- IP : IP: 192.168.55.160; : 255.255.255.0.
: admin; : admin
- SearchNVS
IP

1. SearchNVS **【Search】** , :

SearchNVS

Local IP: 192.168.1.15 Search Set Total: 24

Device Name	Device Model	Channel Total	IP Address	Subnet Mask	Gateway	Data Port	Web Port	Multicast IP
DVS50671	4-Channel CIF Video Encoder	4	192.168.1.207	255.255.255.0	192.168.1.3	5000	80	224.55.8.1
DVS50752	1-Channel D1 Video Encoder	1	192.168.1.203	255.255.255.0	192.168.1.3	5000	80	224.55.8.1
DVS51089	2-Channel HalfD1 Video Encoder	2	192.168.1.204	255.255.255.0	192.168.1.3	5000	80	224.55.8.1
DVS51464	1-Channel D1 Video Encoder	1	192.168.1.171	255.255.255.0	192.168.1.3	5000	80	224.55.8.1
DVS52661	1-Channel D1 Video Encoder	1	192.168.1.170	255.255.255.0	192.168.1.3	5000	80	224.55.8.1

【Connect NVS Local IP】

IP

IP,

IP

NVS.

Search NVS,

IP

LAN.

LAN

IP

ID

“DVS+ID

number”.

2.

IP

IP

IP

IP

IP

IP

:

“start”,

“run”,

“command”

“cmd” (Windows 2000/XP),

“confirm”,

“

ipconfig”

“Enter”,

:

```

C:\WINDOWS\system32\cmd.exe
Microsoft Windows XP [Version 5.1.2600]
(C) Copyright 1985-2001 Microsoft Corp.
H:\Documents and Settings\hhdigital>ipconfig

Windows IP Configuration

Ethernet adapter Local Area Connection:

    Connection-specific DNS Suffix . : 
    IP Address . . . . . : 192.168.1.15
    Subnet Mask . . . . . : 255.255.255.0
    Default Gateway . . . . . : 192.168.1.3
H:\Documents and Settings\hhdigital>

```

IP

IP

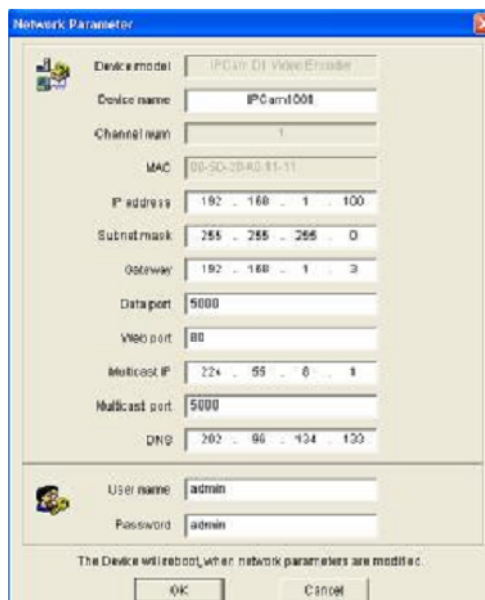
:192.168.1.100.

IP

【Set Parameters】 (

),

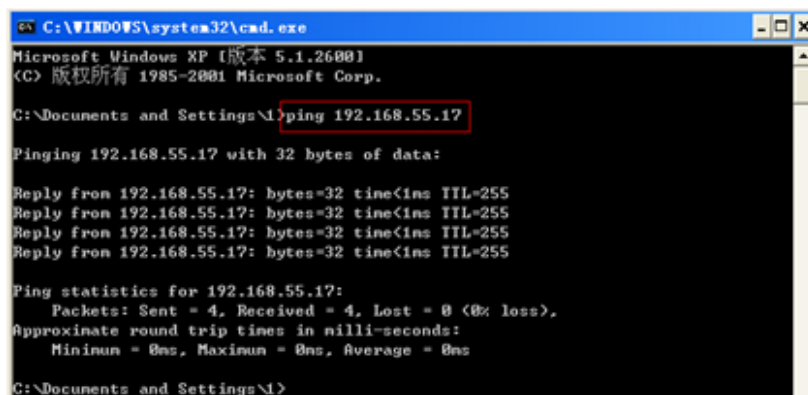
:



; “OK”, IP

4.2

IP : “Start”> “Run”> “command”,
: 192.168.55.17. “Enter”.



, IP

IP

SearchNVS

(IP

4.3

ActiveX

IP

IE

ActiveX.

Active:

ActiveX

Internet Explore:

IP

IP

Internet Explore;

:

【File】

ActiveX:

System Login

Notice

, ActiveX

USER LOGIN

User name:

Password:

For initial access or issues with viewing the camera image, please click the link below to download the ActiveX setup file. Once the file is decompressed and installed, please login to the camera again.

After installing the OCX successfully, please delete cookies in computer when user login error. (IE tool-->Internet option-->browser history (delete temporary file, history, COOKIES...)) or confirm the username and password.

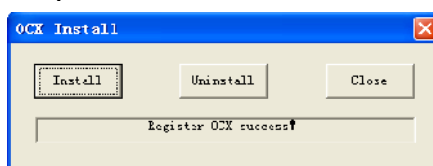
Download OCX Setup File: [File](#)

【Run】

【Save】

ActiveX,

"xdview.exe"



Internet Explorer,

"Install" (

).

ActiveX

"Install OK!" (

).

Internet Explorer,

IP

IP

,

: 192.168.55.160,

System Login

Notice

USER LOGIN

User name:

Password:

For initial access or issues with viewing the camera image, please click the link below to download the ActiveX setup file. Once the file is decompressed and installed, please login to the camera again.

After installing the OCX successfully, please delete cookies in computer when user login error. (IE tool-->Internet option-->browser history (delete temporary file, history, COOKIES...)) or confirm the username and password.

Download OCX Setup File: [File](#)

admin),

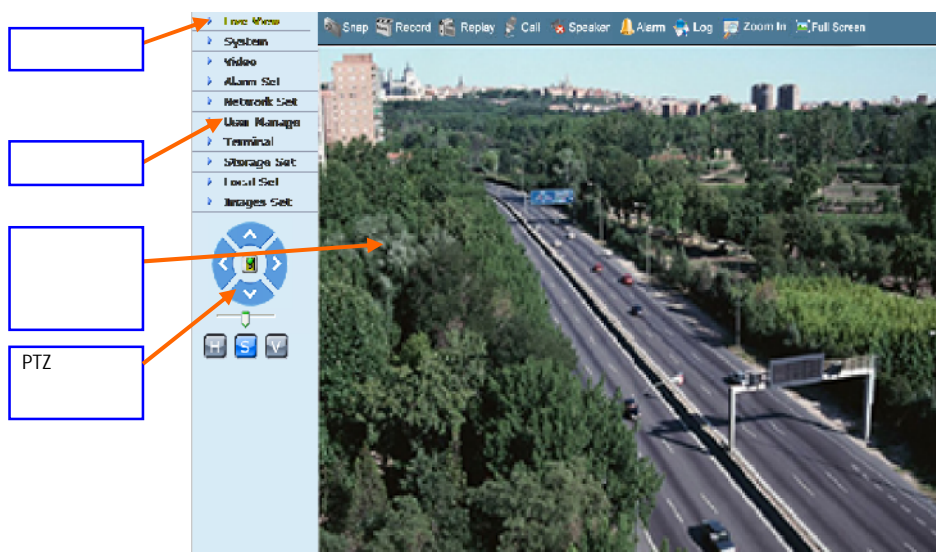
"login" (

).

: admin),

(

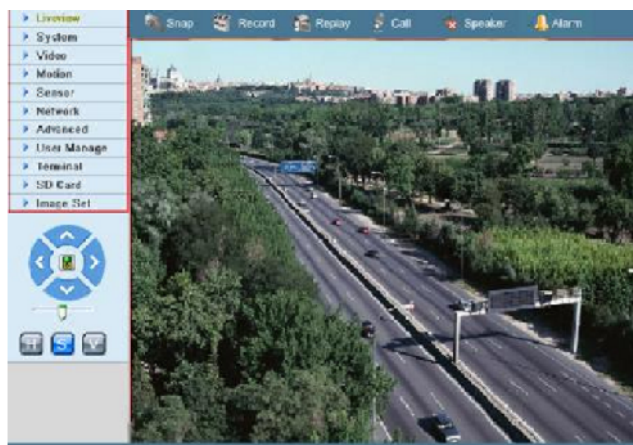
:



5

5.1

IP



【Speaker】:



【Snap】: “Snap”,
JPG

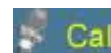
【Record】:



.MP6

【Replay】: “Replay”.

【Call】:



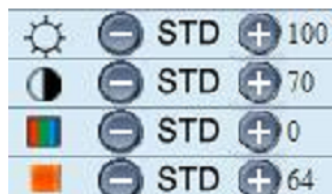
IP

【Alarm】

【Alarm】:

【Pan control】:

【Video Parameters】 CCD IP



CMOS IP

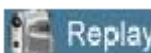


【Lens Control】:



5.2


IP

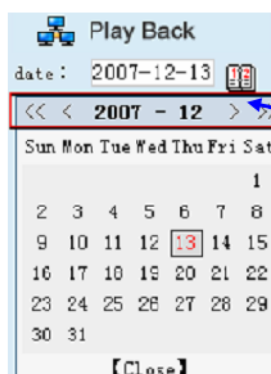
【Playback】 |  Replay :



SD

【Date】 |

, :  :



Click “《 ”icon to previous year
Click “》 ”icon to next year
Click “< ”icon to previous month
Click “> ”icon to next month

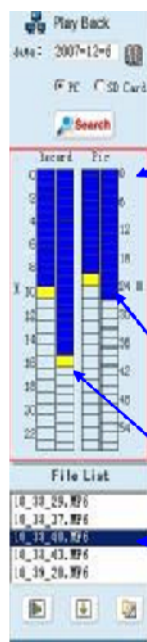
【Local】 |

【SD Card】 |

SD



【File List】



There are two Lists: Record & Pic:
 Record List means the recorded image in PC on Dec 6, 2007
 Pic List means the snapped picture in PC on Dec 6, 2007
 The left of the Record / Pic List is Hour unit (from 0 to 23)
 The right of the Record / Pic List is Minute unit (from 0 to 59)
 The yellow icon means the image recorded / picture snapped in the current selected time.
 The blue icon means the image recorded / picture snapped in the optional time.

This blue icon means the picture snapped at 9:26 on Dec 6, 2007

Yellow icon means the image recorded at 10:38 on Dec 6, 2007

These files were named by the recorded time. For example: the file 10_38_40.mpeg means this image recorded at 10:38:40'.

【Play】


“play”:



The buttons from left to right: File, Play, Pause, Stop, Backward, Fast, Single frame, Audio, Recycle, Snap.

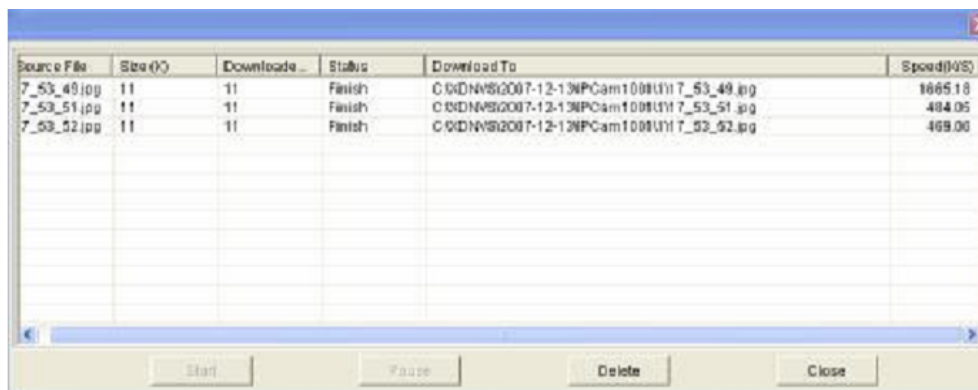
【Download】

SD

“Download” ()

【Download information】

“Download”



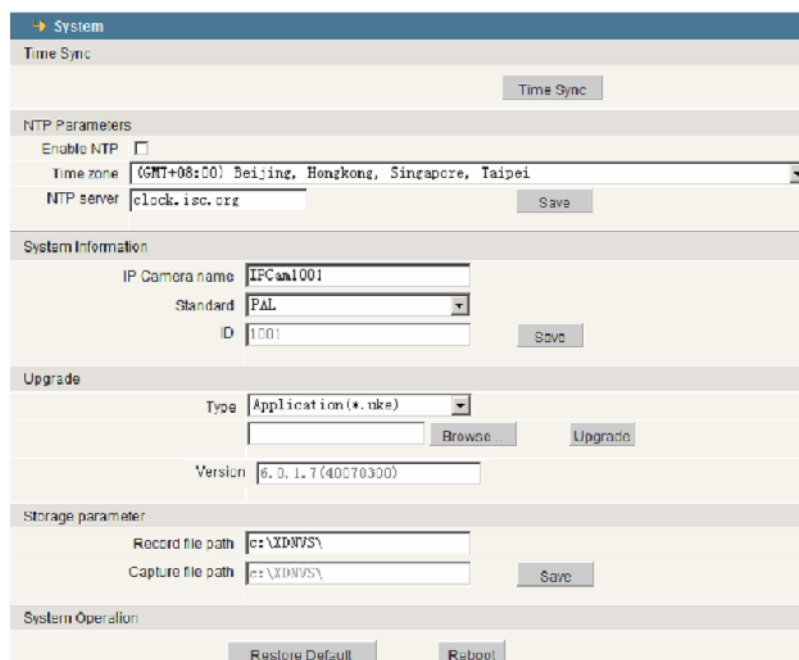
Source File	Size (K)	Downloaded	Status	Download To	Speed (K/S)
7_53_49.jpg	11	11	Finish	C:\XDNVS\2007-12-13\NVCam1001\7_53_49.jpg	1665.18
7_53_51.jpg	11	11	Finish	C:\XDNVS\2007-12-13\NVCam1001\7_53_51.jpg	484.05
7_53_52.jpg	11	11	Finish	C:\XDNVS\2007-12-13\NVCam1001\7_53_52.jpg	469.00

Start Pause Delete Close

[【Pause】](#) , [【Start】](#) ,
[【Delete】](#) ,
[【Close】](#) ,

5.3

IP



System

Time Sync
Time Sync

NTP Parameters
 Enable NTP ☐
 Time zone: (GMT+08:00) Beijing, Hongkong, Singapore, Taipei
 NTP server: clock.isc.org Save

System Information
 IP Camera name: IPCam1001
 Standard: PAL
 ID: 1001 Save

Upgrade
 Type: Application (*.exe)
 Browse Upgrade
 Version: 6.0.1.7 (40070300)

Storage parameter
 Record file path: c:\XDNVS\
 Capture file path: c:\XDNVS\
 Save

System Operation
 Restore Default Reboot

: “Time Sync”,
[【NTP Parameter】](#) | NTP
[【Real-time Image】](#) , NTP
[【System Information】](#) |
[【Image Storage Path Setting】](#) |
 : C:\XDNVS
[【Restore Default】](#) | IP (MAC)

1. **【Reboot】** | **【Reboot】** , 5 IP .

2. IP 6.0.0.0 , IE.

1:
2: OCX
3: Web

2. IP (CCD CMOS)



【Upgrade】 | **【Browse】** , **【Upgrade】** . IP

IP - V6.0.0.1; IP - V6.0.1.7
(: kernel_ccd_v6017.uke). **【Browse】** ,
:"kernel_ccd_v6017.uke", **【Upgrade】** ,
IP
"upgrade success" (), IP

• : IP

• OCX. IP

5.4

IP

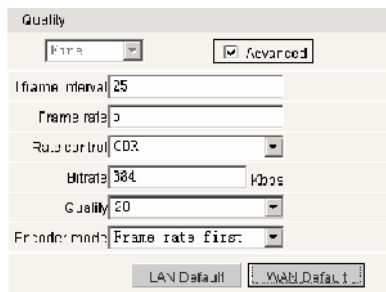


CCD Interface

【Image Resolution】 | , CCD
 PAL D1 (704*576)/ HD1 (704*288)/CIF (352*288)/QCIF (176*144);
 NTSC D1 (704*480)/HD1 (704*240)/CIF (352*240)/QCIF (176*120)

【Image Quality】 | , .

【Advanced image setting】 , . :



【Audio】 | / (: OFF), :

DSP

【Video Mask Set】 | ,
 22 * 18 ,

【All】 |

【Clr】 |



CMOS

【Image Resolution】 CMOS VGA (640*480) QVGA (320*240)
 【Environment Power Frequency】 | ,

【Video Mirror】 :

【Video Flip】 |

IP



($\frac{1}{2} \pm \frac{1}{2} \sqrt{1 - 4 \frac{SD}{SD + 1}}$).

(
【Schedule time setting】 ,
【Alarm output】 ,
【Alarm delay】 ,
【Alarm record in PC】 ,

0~86400

SD

10 ; SD

10 . SD

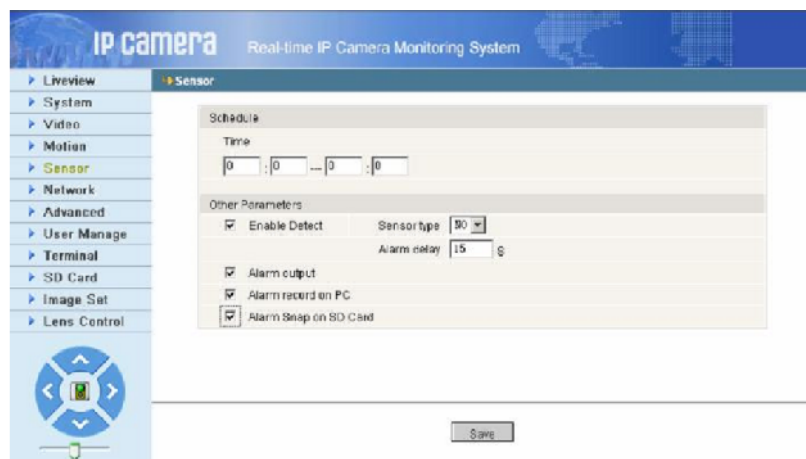
SD .

|
 |
 |

【save】.

5.6

IP



SD

【Schedule time setting】

【Alarm output】

【Alarm delay】

(

),

0~86400

【Alarm record on PC】

【Alarm capture on SD Card】

SD

10
10

SD

SD

SD

【save】

5.7

IP

, DNS , IP , MAC, - , HTTP , IP LAN, IP Wifi Setting

Network	
Basic Parameters Enable DHCP <input type="checkbox"/> IP address: 192.168.1.100 Subnet mask: 255.255.255.0 GateWay: 192.168.1.3 MAC: 00-GU-20-a3-11-11 Data port No.: 8000 HTTP port No.: 80 DNS address: 202.96.134.130	
WiFi Parameters Enable WiFi <input checked="" type="checkbox"/> IP address: 192.168.1.160 Subnet mask: 255.255.255.0 GateWay: 192.168.1.1 SSID: SSID Password: Frequency band: Auto Mode: Auto	
DDNS Parameters Enable DDNS <input checked="" type="checkbox"/> Link to myddns.net DDNS provider: myddns.net DDNS regName: test1 DDNS password: DDNS domain: test1 DDNS server URL: www.myddns.net DDNS server Port: 30000 Data port map No.: 30000 HTTP port map No.: 80 Domain F.C.: test1 myddns.net	
PPPOE Parameters Enable PPPOE <input checked="" type="checkbox"/> PPPOE URL: PPPOE username: 32187200@163.com PPPOE password: Online time: Minutes	

Save

【IP address】 : (/AP), :
 192.168.1.160
【Gateway】 | (/AP), :
 192.168.1.1
【SSID number】 | .
 SSID (/AP).
 IP
 , IP, 192.168.1.160.
 :

DDNS

IP
 .
【DDNS User Name】 | , DDNS
【DDNS Password】 | DDNS
【DDNS Domain Name】 | ,
 DDNS
【DDNS Address】 | DDNS ,
 DNS
 : **DNS** **DNS** **Guangdong.**
 ,
DDNS, **DNS** **DNS**
 (**DNS**).
【DDNS Port】 | : 30000.
【Data Port Mapping】 | TCP/IP
 , TCP/IP
【HTTP Port Map No】 | TCP/IP
 , TCP/IP HTTP
PPPOE:

PPPOE, (,) . WAN .
【Save】 .

5.8 IP

Advanced	
<div> <div> Mail Parameters </div> <div> <div>SMTP server</div> <div>smtp.163.com</div> </div> <div> <div>MAIL from</div> <div>test01@163.com</div> </div> <div> <div>MAIL to</div> <div>test02@163.com</div> </div> <div> <div>SMTP username</div> <div>test01</div> </div> <div> <div>SMTP password</div> <div>●●●●●●●●</div> </div> <div> <div>MAIL title</div> <div>Alarm Message</div> </div> <div> <div>Alarm send mail</div> <div><input checked="" type="checkbox"/></div> </div> <div> <div>Snap picture</div> <div><input checked="" type="checkbox"/></div> </div> <div> <div>Sensor alarm</div> <div><input checked="" type="checkbox"/></div> </div> <div> <div>Snap picture</div> <div><input checked="" type="checkbox"/></div> </div> </div>	

UPNP Parameters

Enable UPNP

☒

UPNP network card

WiFi

UPNP mode

Auto

UPNP server

192.168.1.1

Data port map No.

5000

HTTP port map No.

80

Data mapping status

0

HTTP mapping status

0

Save

【SMTP Server】 : 163, SMTP - smtp.163.com.
【Mail From】 :
【Mail To】 :
【SMTP User Name】 :
【SMTP Password】 :
【Mail Title】 :
【Alarm send mail】 ,

【Sensor alarm】 ,

【Snap picture】 | ,

UPNP

UPNP LAN,
TCP/IP
【UPNP Network Card】
【UPNP mode】 :

— No - No web

web No -

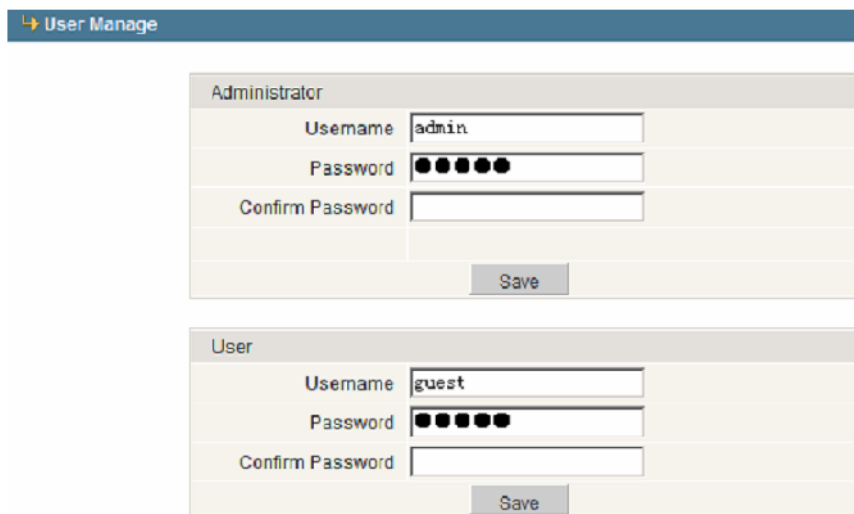
【UPNP server】.

UPNP

【save】.

5.9

IP



User Manage

Administrator

Username: admin

Password: [masked]

Confirm Password: [empty]

Save

User

Username: guest

Password: [masked]

Confirm Password: [empty]

Save

IP

- Administrator (), - Guest ().

IP

IP

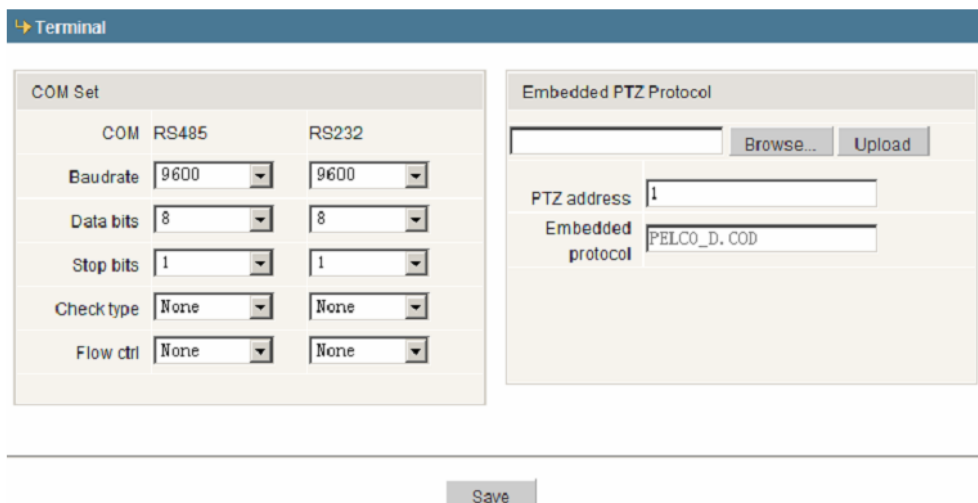
:

(1-16).

Default Administrator Name: admin password: admin
 Default Guest Name: guest password: guest
 Note: Pay attention to match capitals and small letters to User name and password

5.10

IP



Terminal

COM Set

	COM RS485	RS232
Baudrate	9600	9600
Data bits	8	8
Stop bits	1	1
Check type	None	None
Flow ctrl	None	None

Embedded PTZ Protocol

[empty field] Browse... Upload

PTZ address: 1

Embedded protocol: PELCO_D. COD

Save

RS485 . RS485
IP , (, ,
,
RS232 , RS232 .
[【save】](#) .

5.11

IP

SD Card information	
SD Card information	
TotalSize(M)	FreeSize(M)
969	967

SD (M), (M).

1 IP

IP :

TCP	80 (Web)	5000 (, /) ,
UDP	5000	/
	+	

2

IP :	192.168.55.160	:	5000
:	255.255.255.0	Web :	80
:	192.168.55.1	DHCP:	OFF
IP :	192.168.1.160	:	255.255.255.0
:	192.168.1.1	/ :	

:

3 IP

LAN

IP

IP

1. LAN

IP



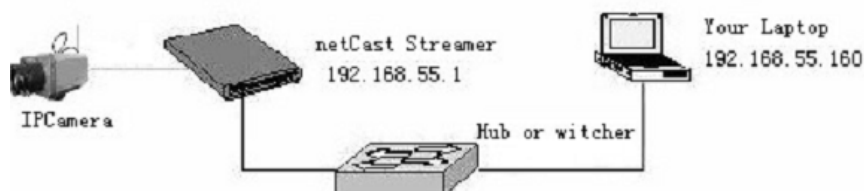
IP

IP

IP IP

IP

LAN:

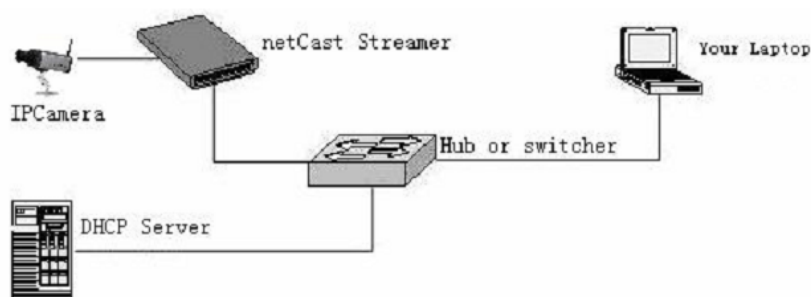


If use wireless camera, also hope use wireless network, you must set the IP address, the subnet mask and gateway address in " wireless network setting". Select upgrade file type

- 1: IP
- 2: IP
- 3: :255.255.255.0;
- 4: :192.168.55.1;

【 Save 】

IP IP DHCP



IP IE [network]
() [DHCP]. 【 Save 】

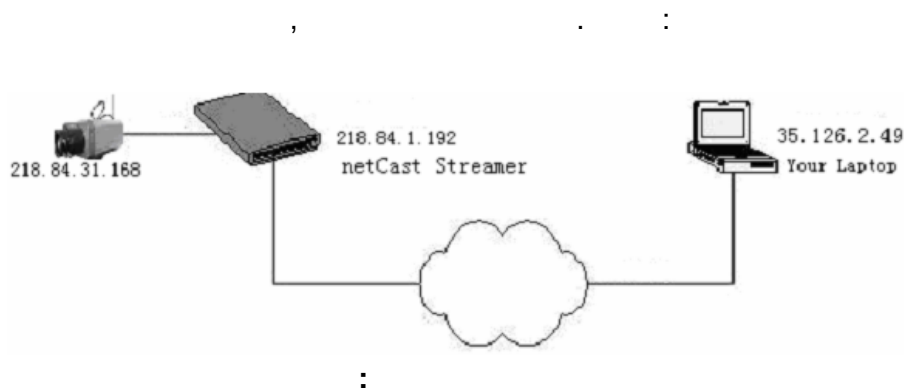
2.

IP : IP
ADSL . . IP

IP .



IP

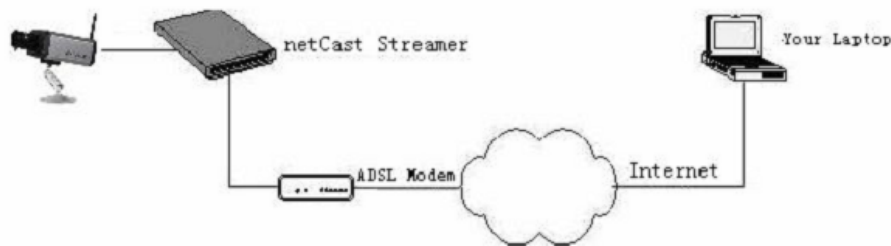


Normal	
Basic Parameters	
Enable DHCP	<input checked="" type="checkbox"/>
IP address	218.84.31.168
Subnetmask	255.255.255.192
GateWay	218.84.31.131
MAC	<input checked="" type="checkbox"/> 00-4a-20-a1-00-3b
Data port No.	5000
HTTP port No.	80
DNS address	202.96.134.133

- 1: IP IE 【network】 ;
 2: IP , : 218.84.31.168;
 3: , : 255.255.255.192;
 4: , : 218.84.31.131;

【 Save 】

➤ ADSL



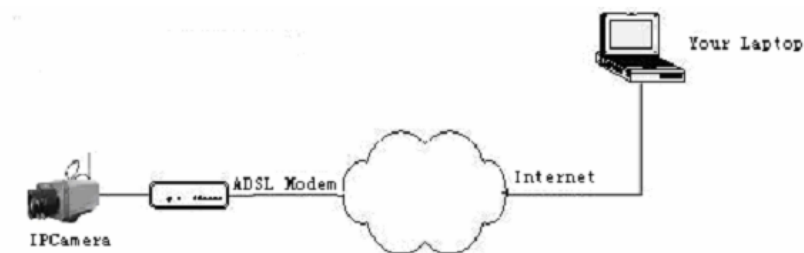
IP DDNS

Basic Parameters		DDNS Parameters	
Enable DHCP	<input type="checkbox"/>	Enable DDNS	<input checked="" type="checkbox"/> Link to mvddns.net
IP address	192.168.55.100	DDNS provider	mvddns.net
Subnet mask	255.255.255.0	DDNS register	IPCas1001
Gateway	192.168.55.1	DDNS password	*****
MAC	00-14-38-a1-60-3b	DDNS email	IPCas1001@mvddns.net
Data port No.	5000	DDNS server URL	www.mvddns.net
HTTP port No.	80	DDNS server Port	30000
DNS address	202.96.134.133	Data port map No.	5000
		HTTP port map No.	80
		Example: http://IPCas1001.mvddns.net	
VNF Parameters		PPPoE Parameters	
Enable WiFi	<input checked="" type="checkbox"/>	Enable PPPoE	<input type="checkbox"/>
IP address	192.168.1.100	PPPoE URL	
Subnet mask	255.255.255.0	PPPoE username	
Gateway	192.168.1.1	PPPoE password	
SSID	11-11-11	Online time	Unlimited
Password			
Frequency band	Auto		
Mode	Auto		

- 1: DDNS (i.e.http://www.mvddns.net),
- 2: (3)
- 3: DDNS; example:http://www.mvddns.net;
- 4: ;
- 5: ;
- 6: DDNS : test.mvddns.net;
- 7: IP DDNS, www.mvddns.net;
- 8: DDNS , admin port:30000;
- 9: ;
- 10: WEB ;

【 Save 】

➤ ADSL PPPoE IP



DDNS, PPPoE, DDNS
 PPPoE.
 【Save】. ADSL
 IP

→ Normal

Basic Parameters Enable DHCP <input type="checkbox"/> IP address 192.168.55.100 Subnet mask 255.255.255.0 GateWay 192.168.55.1 MAC <input type="checkbox"/> 00-4a-20-a1-89-5b Data port No. 8000 HTTP port No. 80 DNS address 202.96.134.133	DDNS Parameters Enable DDNS <input checked="" type="checkbox"/> Link to myddns.net DDNS provider myddns.net DDNS regName IPCam1001 DDNS password ***** DDNS domain IPCam1001.myddns.net DDNS server URL www.myddns.net DDNS server Port 30000 Data port map No. 5000 HTTP port map No. 80 Example: http://IPCam1001.myddns.net
WiFi Parameters Enable WiFi <input checked="" type="checkbox"/> IP address 192.168.1.100 Subnet mask 255.255.255.0 GateWay 192.168.1.1 SSID TP-LINK Password Frequency band Auto Mode Auto	PPPoE Parameters Enable PPPoE <input checked="" type="checkbox"/> PPPoE URI 219.133.179.242 PPPoE username SZ20126800@163.gd PPPoE password ***** Online time 0 minutes

Save

DDNS . . . PPPoE
 PPPoE,

4

1.

⋮
 【RESET】 | IP
 ().
 ⋮
 【RESET】 ,

2. IP

V4.0.0.0 ()?
:
2 IP
(
). IP
: IP , **V6.0.0.1.**

3. IE

: ActiveX.
: IP ActiveX Control.
ActiveX Control IP
【Run】 【Save】 ActiveX.
“xdview.exe” ActiveX.
“Install OK!” ()

4.

IP IE
:
“delete file” (), “delete all offline contents”
(). IP

5.

1:
:
2:
:
3:
:

6.

IP IE
1:
:
2: IP
: IP
IP
3: IP
: IP,
4:
: IP
5: web
:
6:

IP : 192.168.55.160; : 255.255.255.0). IP . (IP

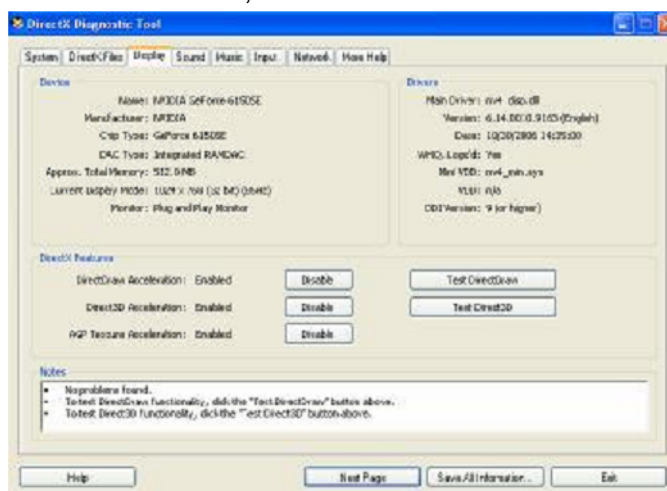
7. ()
IP
config.exe, ActiveX (C:\Winnt\system32\Config.exe);
EMS; IE
IP

8. 1:
2:
IP
IP

9. IP
IP

10. 1: , DirectX ;
2:
(

DirectX, "DXDIAG":



DirectX. DirectDraw, Direct3D, AGP DirectX