

UNEX

системы видеонаблюдения

РУКОВОДСТВО ПОЛЬЗОВАТЕЛЯ

IP

UIP-E8180



1.		3
2.		4
2.1		4
2.2		4
2.3	6
3		7
4		8
5		9
6	IP	WEB 13
	1	 15
	2	 15

1.



ВНИМАНИЕ
РИСК УДАРА ЭЛЕКТРИЧЕСКИМ ТОКОМ
НЕ ОТКРЫВАТЬ



-10° - + 50°

2.

2.1

- | | | |
|--------|---|---|
| 1. IP | 1 | . |
| 2. | 1 | . |
| 3. I/O | 1 | . |
| 4. CD | 1 | . |

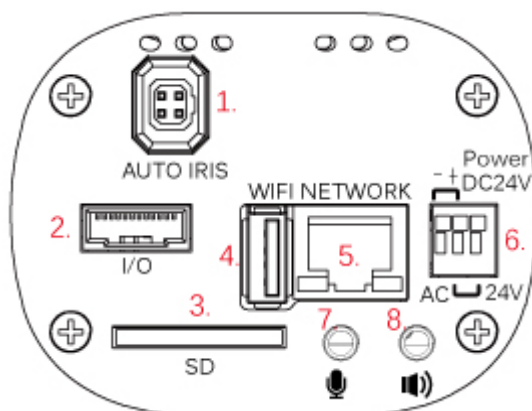
2.2

	UIP-E8180A	UIP-E8180U	UIP-E8180F
	1/3" 1.3MP CMOS	1/2.7" HD-1080p CMOS	1/2.5" 5MgPix CMOS
	1280x1024	1920 x 1080	2592 x 1920
	CS		
	0.1lux @ F1.2		
	1/50 ~ 1/12000		
	DC drive		
	>38,1		
/			
-	M-JPEG, MPEG-4, H.264 ()		
MJPEG/ H.264	30 / @ 1.3MP SXGA / D1 / 2CIF / VGA / QVGA / QQVGA	30 / @ HD1080p / HD720p / VGA / QVGA	10 / @ 2592x1920 5MP 30 / @ HD-1080p / 1.3MP SXGA / HDTV-720p / VGA / QVGA / QQVGA
MPEG4	30 / @ 1.3MP SXGA / D1 / 2CIF / VGA / QVGA / QQVGA	30 / @ HD1080p / HD720p / VGA / QVGA	30 / @ HD-1080p / HD-720p / VGA / QVGA

	(CBR/VBR)	(4 ROI), (CBR/VBR)	(8 ROI), - (CBR/VBR)
	M-JPEG: 5 (); MPEG-4/H.264 : 1 ~10M /		
	SDTV –	SDTV – HDTV – (Y/Pb/Pr)	
	AWB, AES, AGC, BLC, / , WDR, 4 .		
	ADPCM,		
	. , 1 .		
	1		
	, IP , -		
-	TCP/IP, UDP, DHCP, PPPoE, HTTP, HTTPS, DNS, DynDNS, NTP, FTP, SMTP, UDP, RTP, RTSP, RTCP,3GPP, UPnP, IPv4/v6, SAMBA client (NAS)		
	CGI, ONVIF		
			-
	, ,		
	, ,		
	E-mail,	FTP E-mail,	- SD
	SD/SDHC		
	24		
	1) RJ 45 10Base-T/100Base-TX ; 2) 3-pin DC/AC; 3) / ; 4) / ; 5) RS485/RS482; 6) , ;		

	7) ; 8) USB Wi-Fi
	9) SD
WiFi	, USB Dongle
/	ARM9 Base SoC, 256M RAM, 128 M Flash
	DC: 8~25 / AC: 8~25 / PoE
.	-10 °C ~ 50 °C / 20~80%
	76() X 58() X 109()

2.3



1. ;
2. I/O ;
3. SD ;
4. WiFi USB Dongle;
5. RJ-45 Ethernet ;
6. (8-25 AC DC);
7. ;
8. .

/



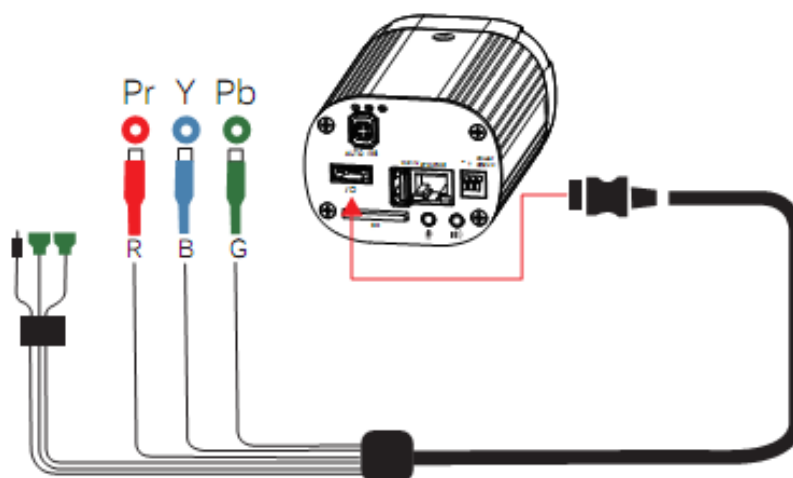
3

1. CS/ , ().

! , -

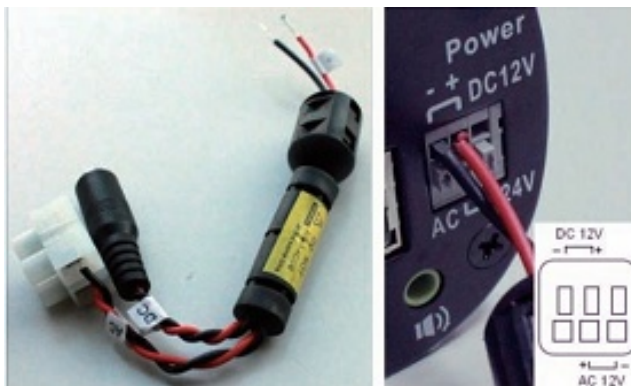
2.
3. CAT5 RJ-45 Ethernet

4. 422/RS-485 , / RS-
422/RS-485 / / -



! / -

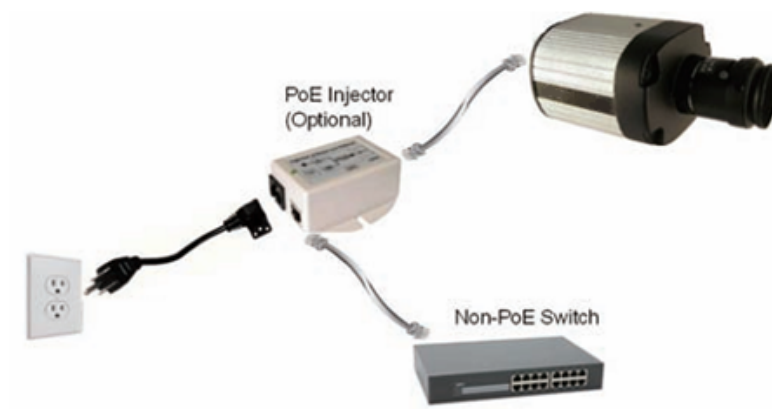
5. / ,
6. .



7. , SD .
8. .
- 110-220 .
- IP .

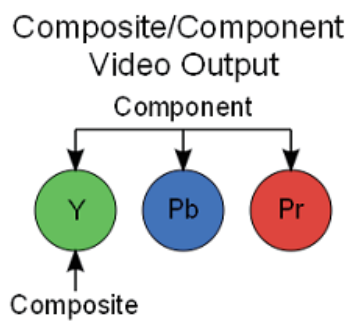
PoE

PoE



4

3



5

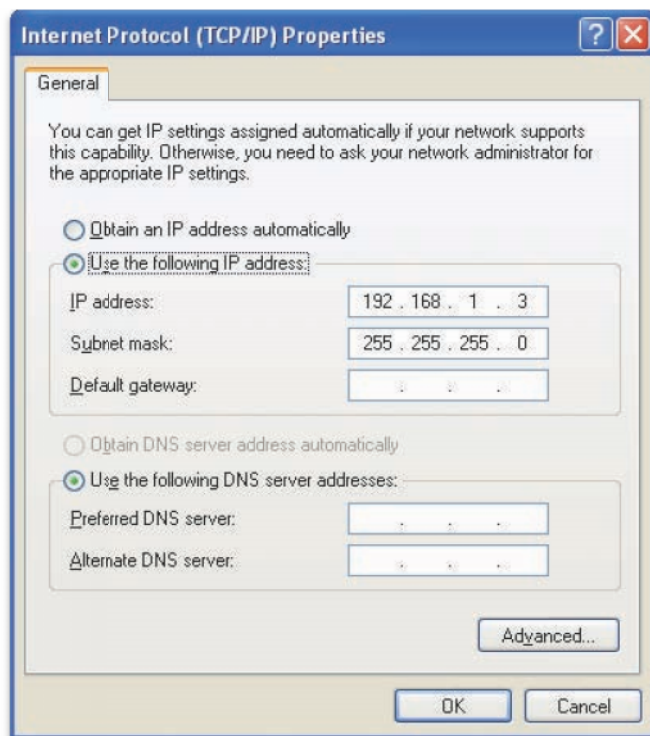
IPScan™ , IP - CD.

IP	192.168.1.2
	255.255.255.0
	192.168.1.1

" " . (. -)

IP 192.168.1.2. IP :

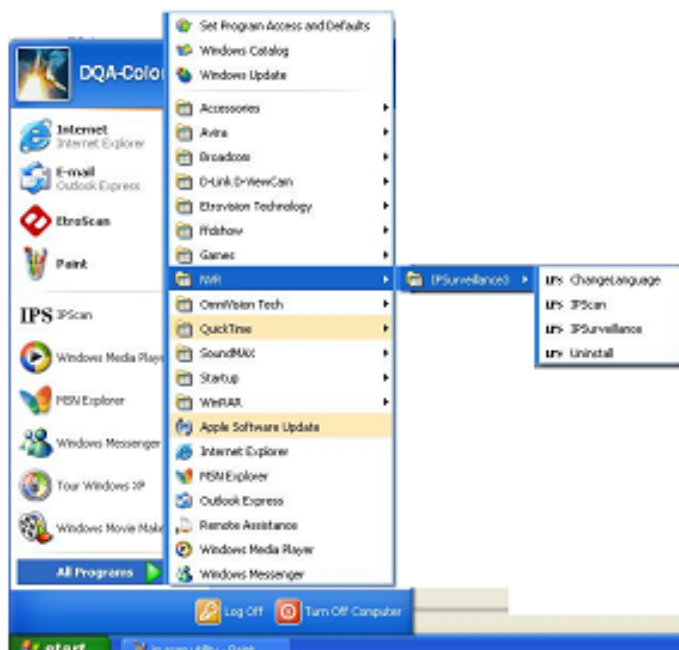
, IP .



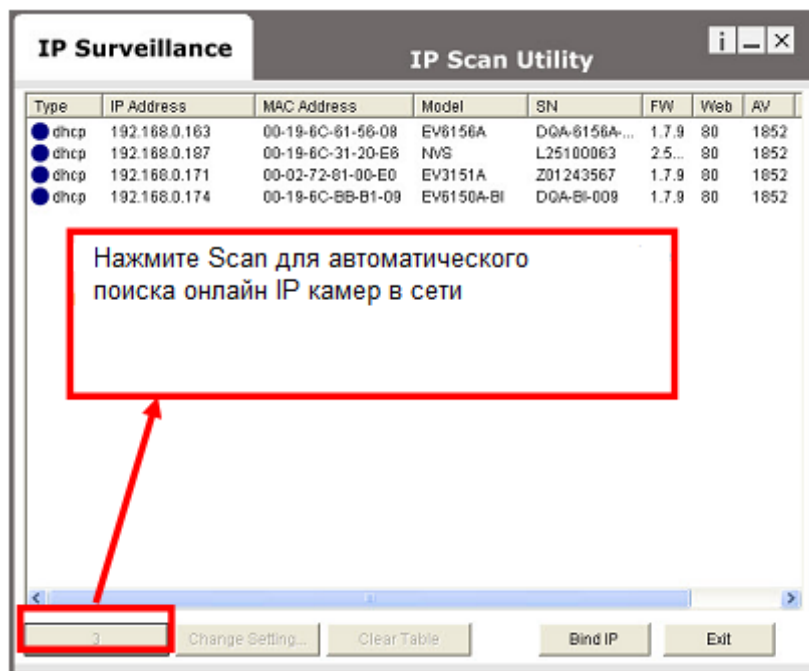
IP Scan™.
Unex

IP Scan™

IP IP



IPScan™



Scan

IP MAC

IP

MAC

MAC

Clear Table

Scan

IP 192.168.1.2.

IP

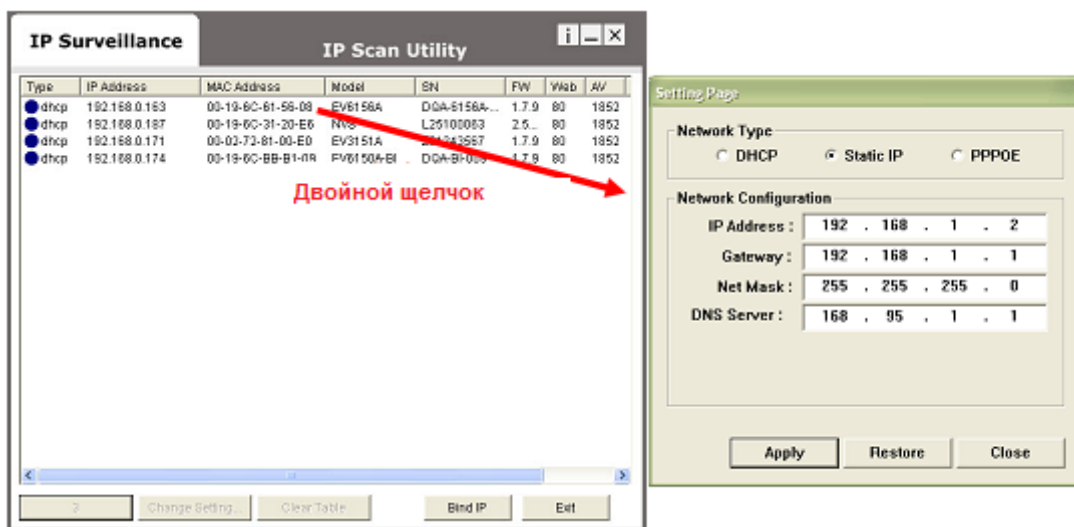


!

IPScan™

C IPScan™

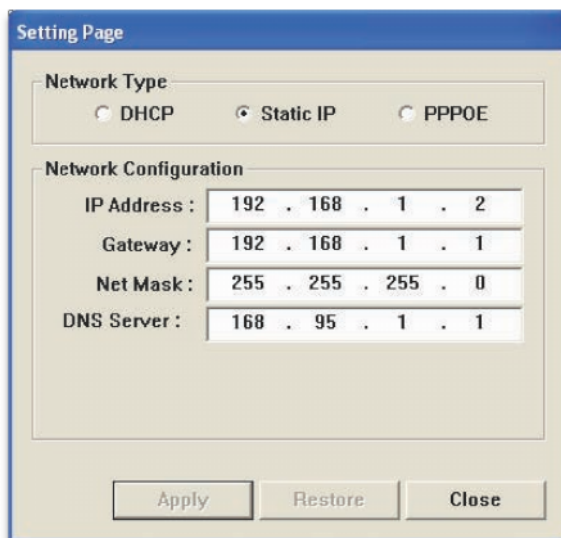
:



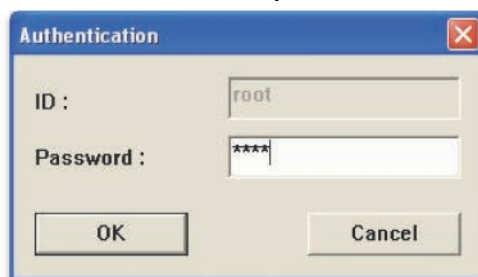
1.

2.

Change Setting ()



Apply



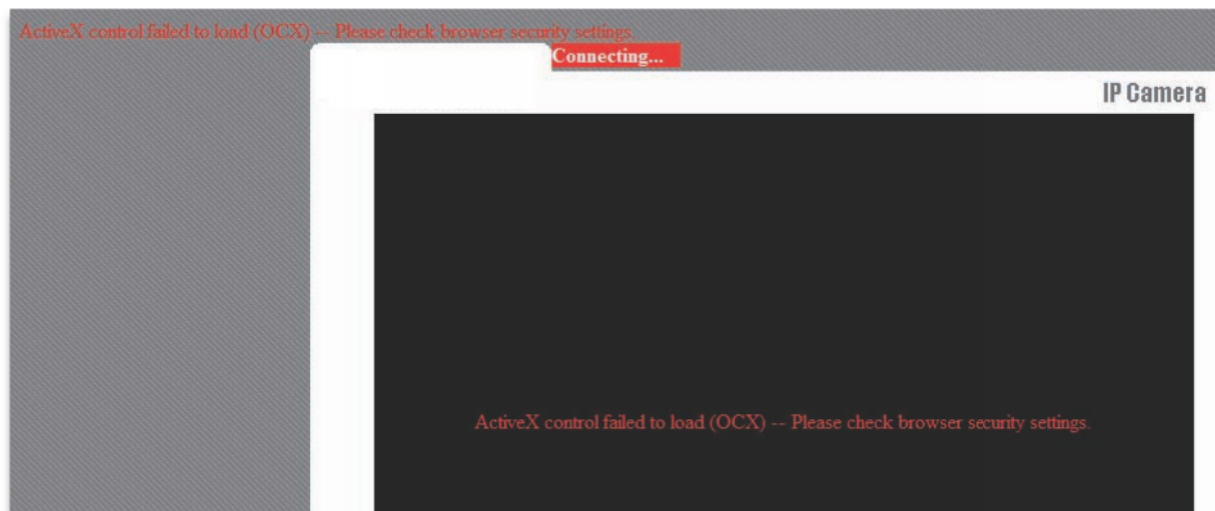
ID: root

Password: pass

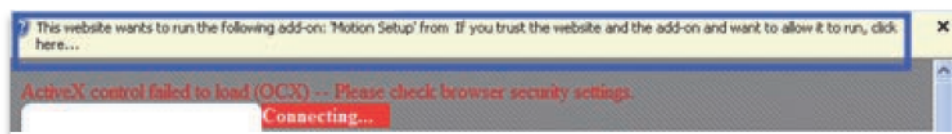
45 . , IP ;
IP -
IP -
DHCP, MAC
6 IP WEB
IP MS Internet Explorer.
IP web ,
ActiveX.
1. MS Internet Explorer;
2. IP : http://<IP ADDRESS> (:
http://10.1.21.53);
3. :
: root
: pass
4. -
!
:



: “ActiveX control failed to load (OCX)”



ActiveX



Run Add –



Run ()



1

IP : 192.168.1.2 : 5000
: 255.255.255.0 Web : 80
: 192.168.1.1 DHCP: OFF

2

1. IE

: ActiveX.
: IP ActiveX Control.
ActiveX Control IP
【Run】 【Save】 ActiveX.
“xdview.exe” ActiveX.
“Install OK!” ()

2.

IP IE
: “delete file” (), “delete all offline contents”
().

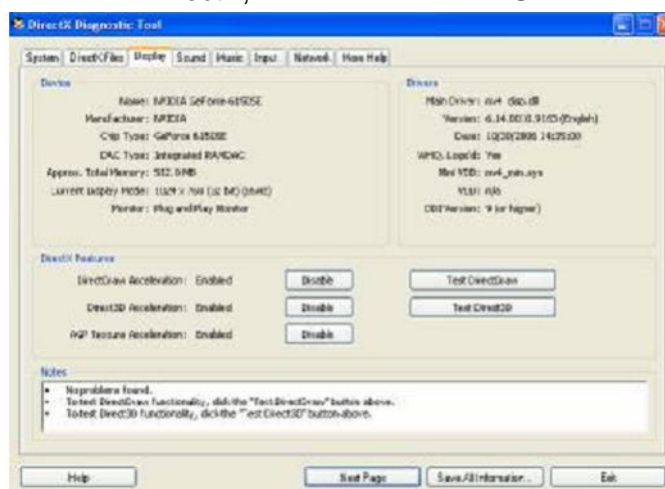
3.

1:
:
2:
:
3:
:

4.

IP IE
1:
:
2: IP
: IP , IP
IP
3: IP
: IP,
4:
: IP
5: - web

- 6:
- IP IP
5. ()
- config.exe, ActiveX (
- C:\Winnt\system32\Config.exe);
- EMS; IE
- IP
- 6.
- 1:
- 2:
- IP
- IP
7. NVS
- NVS
- 8.
- 1: , DirectX ;
- 2: ,
- (
- DirectX, "DXDIAG":



DirectDraw, Direct3D, AGP DirectX.

DirectX