

ИПЕХ

системы видеонаблюдения

РУКОВОДСТВО ПОЛЬЗОВАТЕЛЯ

UIP 5800D



1.	3
2.	3
2.1	3
2.2	4
2.3	4
2.4	5
3	6
3.1	6
3.2	7
3.3	8
3.3.1	8
3.3.2	9
3.4	9
4	12
4.1	12
4.2	14
4.3	ACTIVE X	14
1	16
2	16

2.

2.1

IP

IP-

704 576. IP-

CCTV

IP-

UIP-5801D - 1	D1
UIP-5802D - 2	D1
UIP-5804D - 4	D1

2.2

- - Internet
- Hisilicon Hi3512 Linux,
- H.264 G.726
- SD (32)
- PAL/NTSC
- D1, Half-D1, CIF QCIF
-
- 32
- / 16 /
- LAN,WAN IEEE802.11a/b/g/n (-
-)
- RS-485
-
- 4
- :
- ,
- : HTTP, TCP/IP, UDP, SMTP, DDNS, DNS, SNTP, BOOTP, DHCP, FTP, SNMP, RTP, UPNP
- , -

2.3

	1/2/4 , PAL NTSC;BNC (1.0Vp-p,75)
	H.264 Main Profile@Level 3.0, MJPEG
	PAL: 176*144(QCIF), 352*288(CIF), 704x288(2CIF), 704*576(D1) NTSC: 176*128(QCIF),352*240(CIF),704x288(2CIF), 704*480(D1)
	, , , ,
	PAL: 1-25 /
	32Kbps~16Mbps
	<200 (LAN)
	1/2/4 , RCA ; , :4.7 O

	1
	G.726
	1
	10 Base-T/100 Base-TX Ethernet (RJ-45)
	1 RS485
	SD , SD2.0 (32)
	4 , NO () NC()
	4 , 120 AC 1A/24 DC 1A
	e-mail, -
	-10 ~ +55
	10 ~ 85%
	DC 12 ,1A
-	15
-	TCP, UDP, IP, HTTP, FTP, SMTP, DHCP, DNS,ARP, ICMP, POP3, NTP, IPsec, UPNP,RTP,RTCP
	205 150 50

2.4

- : Pentium 2.8
- : 512
- : Nvidia Geforce FX5200 ATI RADEON 7000(9000)
- 256M <
- >
- :
- : , 40 G

Microsoft Windows /2000/XP/2003/Vista/Windows 7 (32-)

- IE 7.0
- DirectX9.0

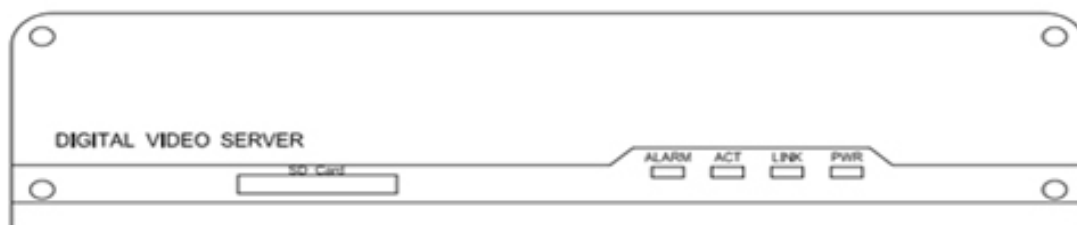
- TCP/IP

•

: Nvidia Tnt/Tnt2, Geforce Mx200/400/420/440,
 Fx5200/5600 ; ATIR adeon7000/7200/
 7500/8500/9000/9200/9500/9600 , MatroxG450/550; INTEL
 845G/865G -

3

3.1

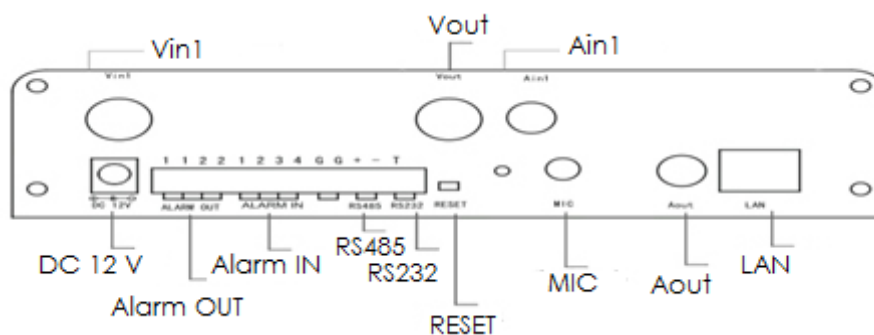


:

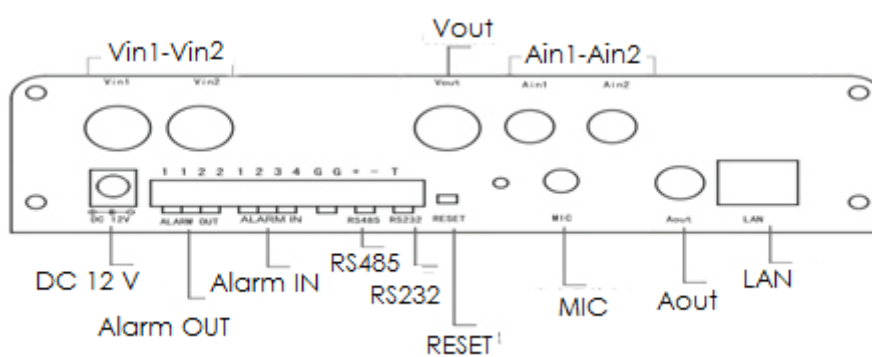
PWR ()			DVS
			DVS
LINK ()			
ACT ()			
ALARM ()			

3.2

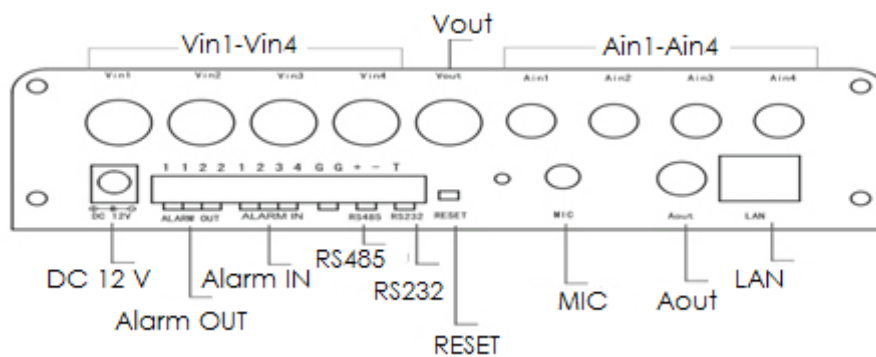
1- UIP-5801D:



2- UIP-5802D:



4- UIP-5804D



DC 12 V:

LAN: Ethernet

Vin1—Vin4: 1 ~ 4

Ain1—Ain4 : 1 ~ 4

ANT:

MIC:

Aout:

RESET:



-

:

«

»

ALARM OUT: 4

4

«1 – 1», «2 – 2», «3 – 3», «4 – 4»

(

,

..)

ALARM IN: 4

4

«1», «2», «3», «4» «G» () -

(),

(«NO»)

(«NC»).

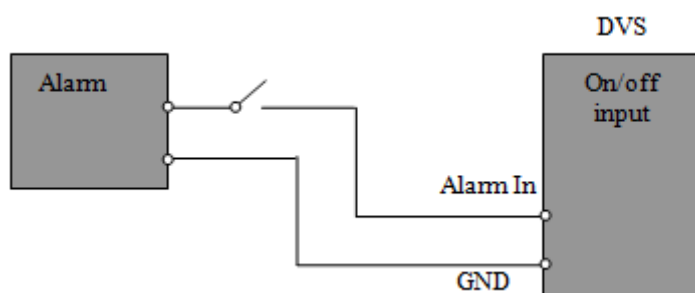
RS485 RS232 :

G	+	-	T	R
	RS485 +	RS485 -	RS232	RS232

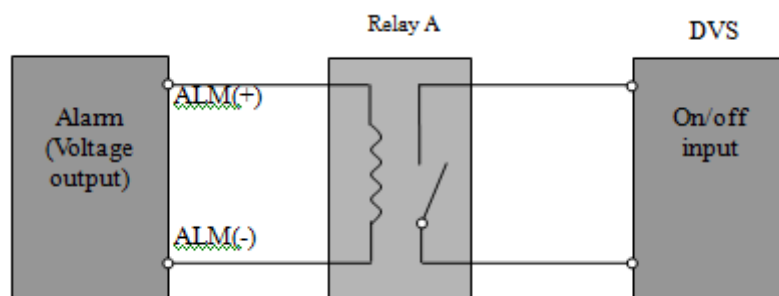
3.3

3.3.1

1.



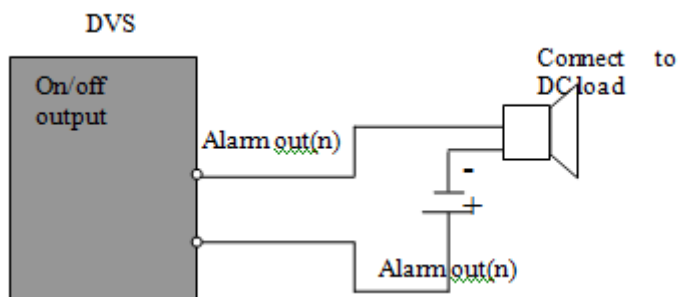
2.



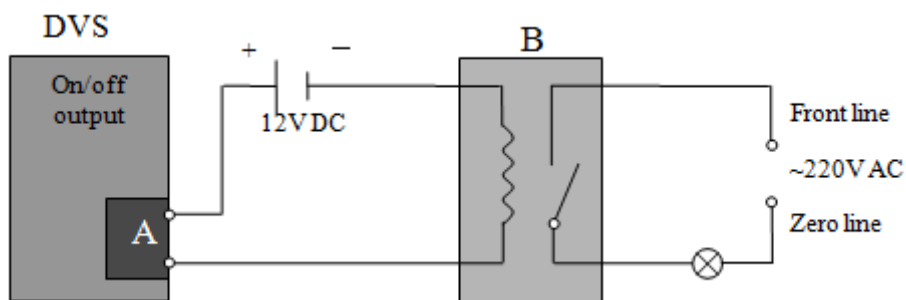
: A
DVS (120VAC/1A 24VDC/1A).

3.3.2

1.



2.



— 1A DVS, 24VDC/1A 120 —

3.4

3.4.1

IP / /

1:

2:

(DC 12V)

!

+12 !

3:

4:

BNC

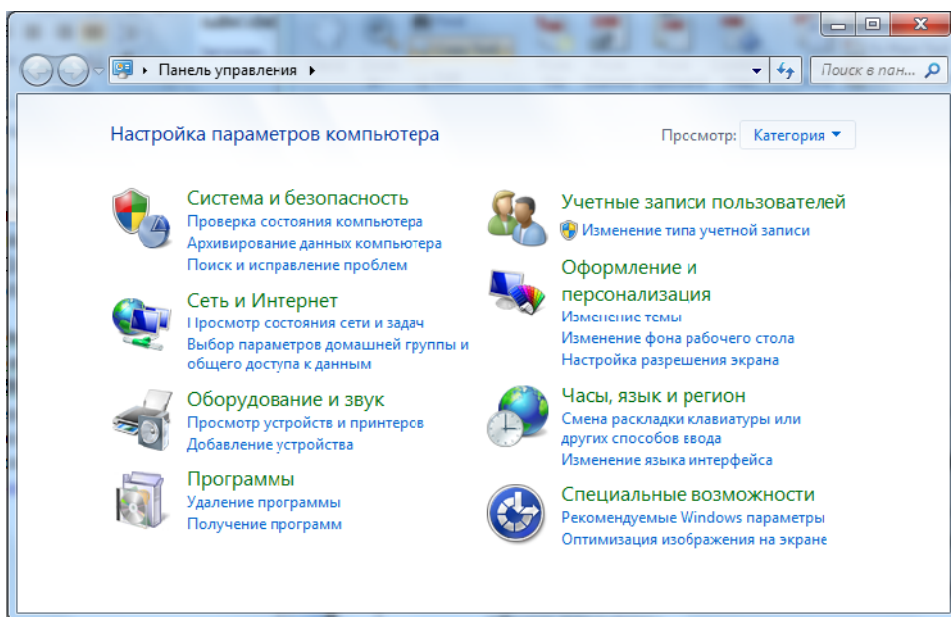
5:

, IP

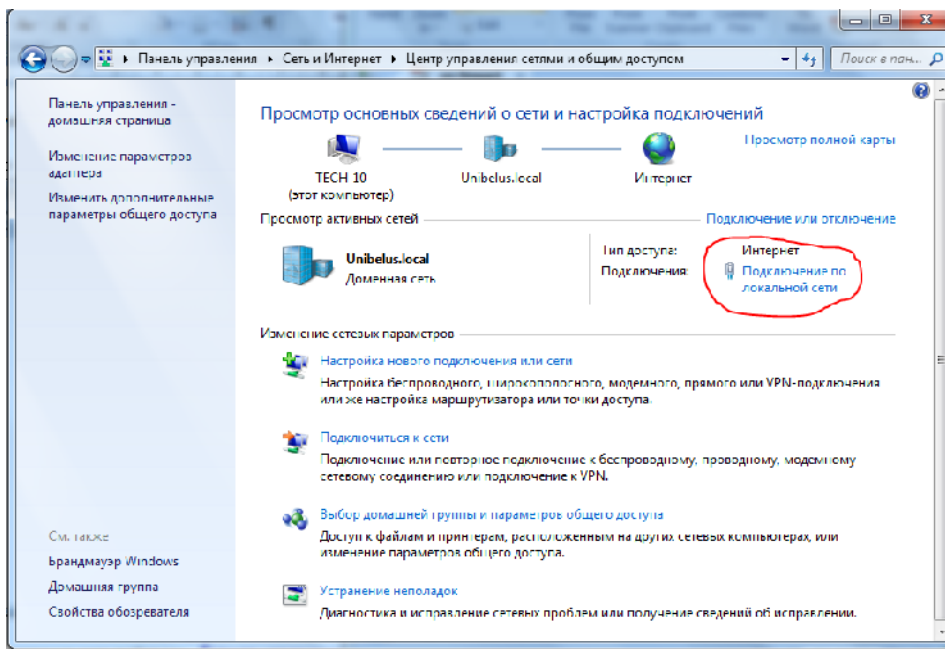
IE

3.4.2

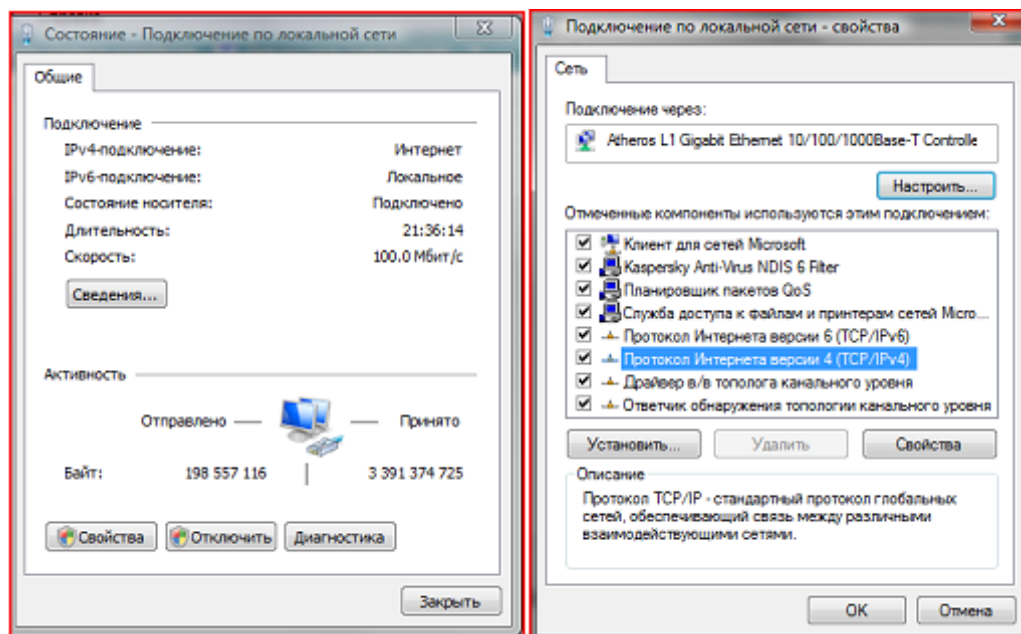
— , , IP-
:
,
255.255.255.0!
Windows 7
IP
:
[] – [] [] – [] [] .



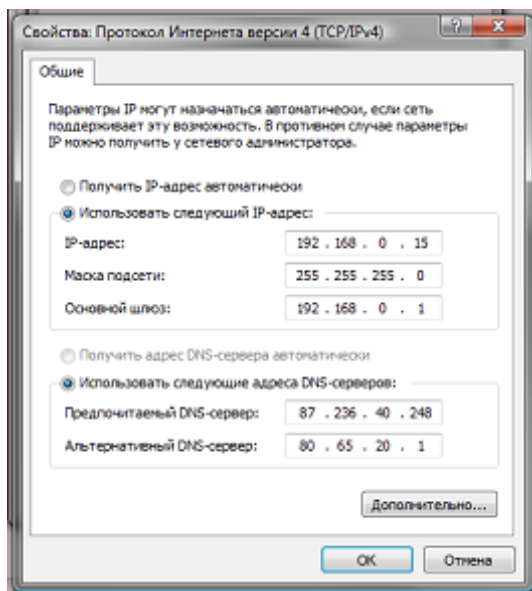
[] [] [] [] .
[] []



IP-



(TCP/IPv4)



IP-адрес: 192.168.0.15
 Маска подсети: 255.255.255.0
 Основной шлюз: 192.168.0.1

Предпочитаемый DNS-сервер: 87.236.40.248
 Альтернативный DNS-сервер: 80.65.20.1

«...»
 :
 Internet Explorer 7.0 !
 ()
 , , DVS

4

4.1

- SearchNVS (IP-адрес: 192.168.55.66, маска подсети: 255.255.255.0).
- A: Search NVS **【tool software】** CD
 - B: SearchNVS, -
- 【Start】 --- 【all programs】 --- 【NVS Center500】 --- 【Search NVS】**
- : IP: 192.168.55.160; :
 255.255.255.0. : admin; : admin
 - SearchNVS -

1. SearchNVS **【Search】**, :

SearchNVS

Local IP: 192.168.1.15 Search Set Total: 24

Device Name	Device Model	Channel Total	IP Address	Subnet Mask	Gateway	Data Port	Web Port	Multicast IP
DVS50671	4-Channel CIF Video Encoder	4	192.168.1.207	255.255.255.0	192.168.1.3	5000	80	224.55.8.1
DVS50752	1-Channel D1 Video Encoder	1	192.168.1.203	255.255.255.0	192.168.1.3	5000	80	224.55.8.1
DVS51089	2-Channel HalfD1 Video Encoder	2	192.168.1.204	255.255.255.0	192.168.1.3	5000	80	224.55.8.1
DVS51464	1-Channel D1 Video Encoder	1	192.168.1.171	255.255.255.0	192.168.1.3	5000	80	224.55.8.1
DVS52661	1-Channel D1 Video Encoder	1	192.168.1.170	255.255.255.0	192.168.1.3	5000	80	224.55.8.1

【Connect NVS Local IP】

IP

IP,

IP

NVS.

2. IP

IP

IP

IP

“command”

“cmd” (Windows 2000/XP),

“start”,

“run”,

“confirm”,

“ipconfig”

“Enter”,

```

C:\WINDOWS\system32\cmd.exe
Microsoft Windows XP [Version 5.1.2600]
(C) Copyright 1985-2001 Microsoft Corp.
H:\Documents and Settings\hhdigital>ipconfig

Windows IP Configuration

Ethernet adapter Local Area Connection:

    Connection-specific DNS Suffix  . : 
    IP Address. . . . . : 192.168.1.15
    Subnet Mask . . . . . : 255.255.255.0
    Default Gateway . . . . . : 192.168.1.3
H:\Documents and Settings\hhdigital>

```

IP

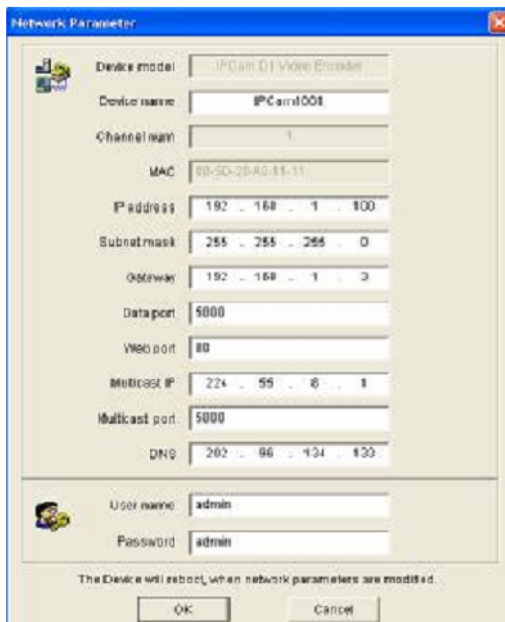
IP

:192.168.1.100.

【Set Parameters】 (

),

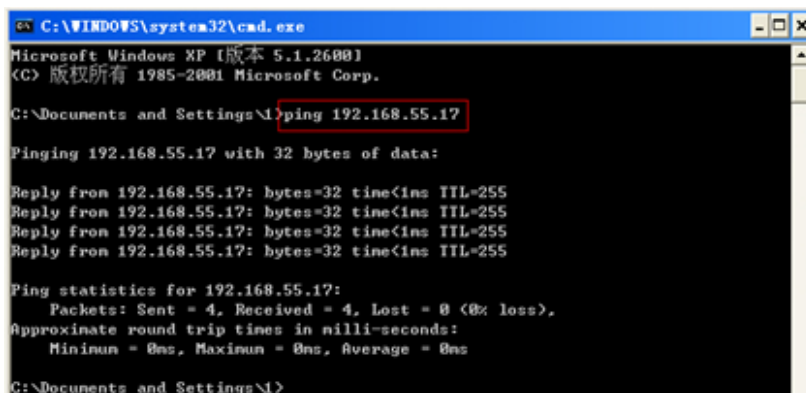
:



; “OK”, IP -

4.2

: “Start”> “Run”> “command”, -
: 192.168.55.17. “Enter”.



IP

SearchNVS

(IP

4.3

ActiveX

IE

ActiveX.

ActiveX:

ActiveX

Internet Explore:

IP

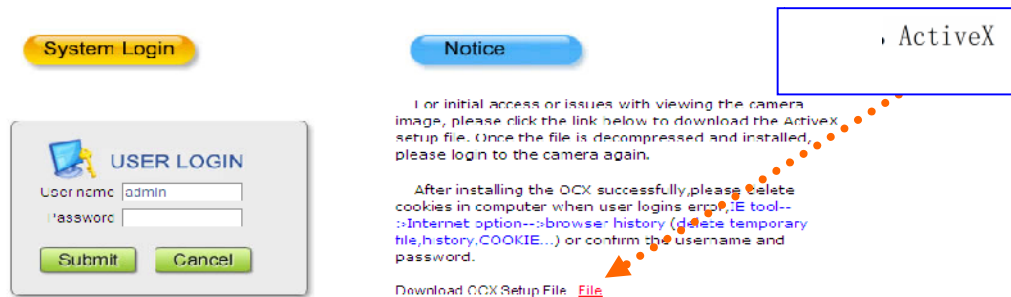
IP

Internet Explore;

:

【File】

ActiveX:



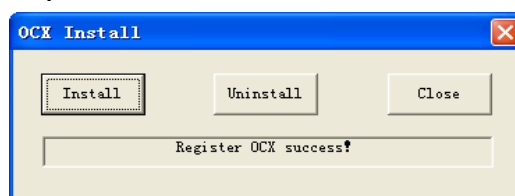
tiveX,

【Run】

【Save】

Ac-

“xdview.exe”



Internet Explorer,

“Install” (

).

ActiveX

“Install OK!” (

).

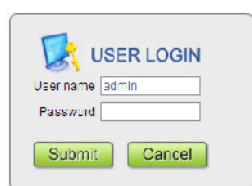
Internet Explorer,

IP

192.168.55.17,

System Login

Notice



For initial access or issues with viewing the camera image, please click the link below to download the ActiveX setup file. Once the file is decompressed and installed, please login to the camera again.

After installing the OCX successfully, please delete cookies in computer when user logs in error, IE tool-->Internet option-->browser history (delete temporary file, history, COOKIE...) or confirm the username and password.

Download OCX Setup File [File](#)

admin),

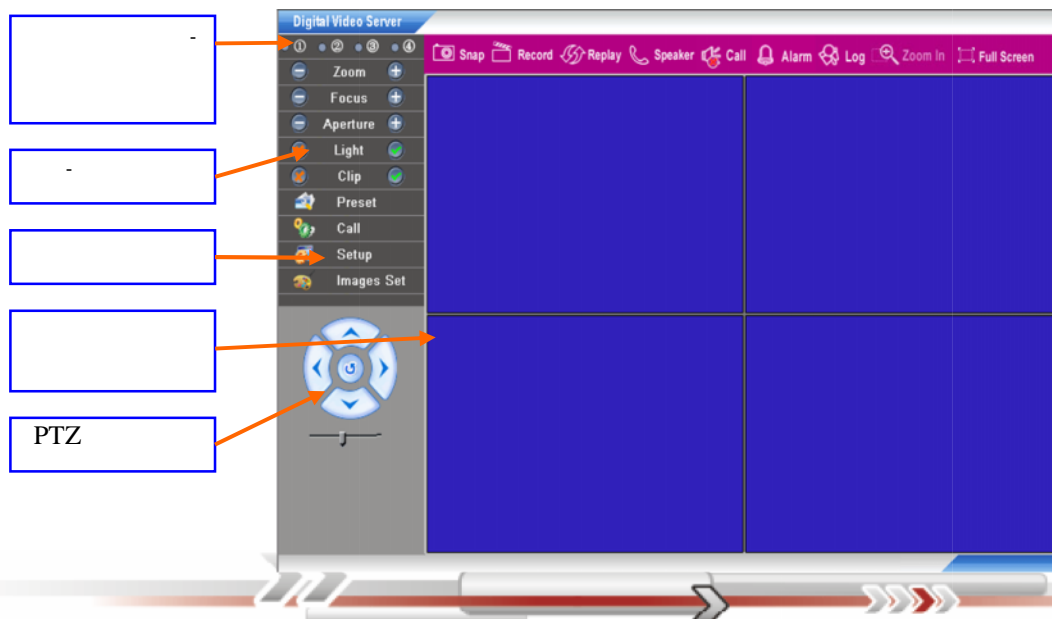
“login” (

).

: admin),

(

:



ActiveX»

1

ActiveX

«

IP : 192.168.55.160 : 5000

: 255.255.255.0 Web : 80

: 192.168.55.1 DHCP: OFF

IP : 192.168.1.160 : 255.255.255.0

: 192.168.1.1 / :

2

1.

IP

2.

V4.0.0.0 ()?

2 IP

IP

3. IE

ActiveX.

IP

ActiveX Control.

ActiveX Control IP

ActiveX.

“xdview.exe”

ActiveX.

“Install OK!” ()



4. **IE**
:
"delete file" (), "delete all offline contents"
().

5.
1:
:
2:
:
3:
:

6. **IE**

1:
:
2: IP
:
IP
3: IP
:
IP,
4:
:
5: - web
:
6:
:
IP
(IP : 192.168.55.160; : 255.255.255.0).

7. ()
:
:
config.exe, ActiveX (:
C:\Winnt\system32\Config.exe); EMS; IE

8.
1:
:
2:
:



9. NVS

: NVS

:

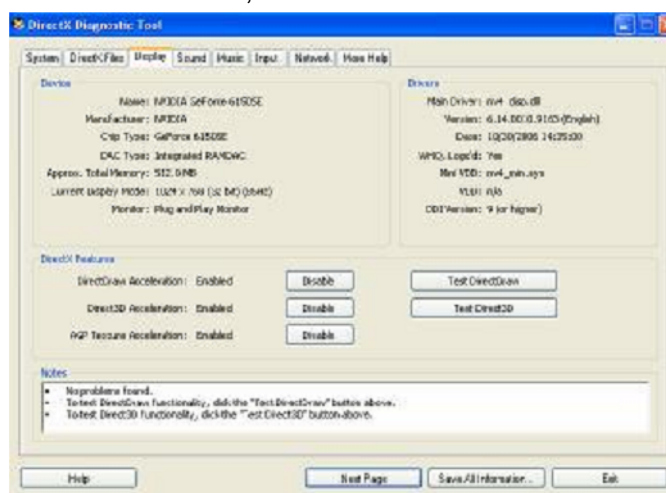
10.

1: , DirectX ;

2: , -

); -

: DirectX, "DXDIAG":



rectX. : DirectDraw, Direct3D, AGP DirectX Di-