

ИПЕХ

системы видеонаблюдения

РУКОВОДСТВО ПОЛЬЗОВАТЕЛЯ

IP

UIP-E6250



1.	3
2.	4
2.1	4
2.2	4
2.3	6
2.4	6
3	UIP-E6250A.....	7
3.1	7
3.2	IP	7
3.3	8
3.4	IP WEB	12
4	15
4.1	IP	15
4.2	QUICK CONFIG ().....	16
4.3	19
5	21
	1	22
	2	22

1.



ВНИМАНИЕ
РИСК УДАРА ЭЛЕКТРИЧЕСКИМ ТОКОМ
НЕ ОТКРЫВАТЬ



-10° - + 50°

2.

2.1

- | | | |
|-----------|---|---|
| 1. IP | 1 | . |
| 2. | 1 | . |
| 3. USB | 1 | . |
| 4. Combo | | |
| 5. CD-ROM | 1 | . |

2.2

	SONY 1/4" EX-VIEW
	: 36, : 12
	f=3.4 () ~ 122.4 (), F1.6 ~ F4.5
	0.01
/	360° / 90° / 180°
« / »	ICR,
()	440,000 (PAL)
	530
/	50
	32
	16 (8 -)
	-
/	
	M-JPEG, MPEG-4, H.264 ()
	D1(720x576), CIF(352x288), QCIF(176x144)
	25 / @ D1
	, , ,
	M-JPEG: 5 ();

	MPEG-4/H.264 : 64K~4M /
/	1 / 1 (ADPCM)
	, IP , -
	TCP/IP, UDP, DHCP, PPPoE, HTTP, HTTPS, DNS, DynDNS, NTP, FTP, SMTP, UDP, RTP, RTSP, RTCP, 3GPP, UPnP, IPv4/v6, SAMBA client (NAS)
	E-mail, , E-mail, FTP
	- , 10
	1) RJ 45 10Base-T/100Base-TX Ethernet port
	2) DC Jack
	3)
	4) BNC
	5)
	6)
	7) DI/DO
	ARM9 Base SoC, 128M RAM, 16 M Flash
	12 DC /2.42
	IP66 ()
	218 (Ø) x 247 () ()
	220 (Ø) x 262 () ()
	- 35 °C ~ 55 °C
	20 80%
	7

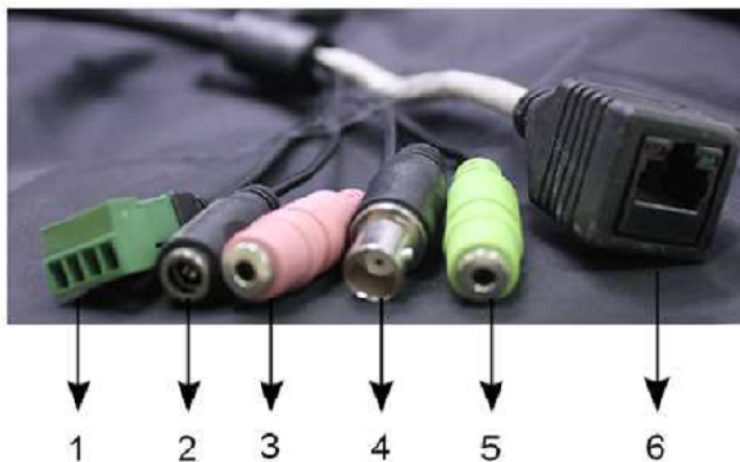
2.3

IP Unex UIP-E6250A

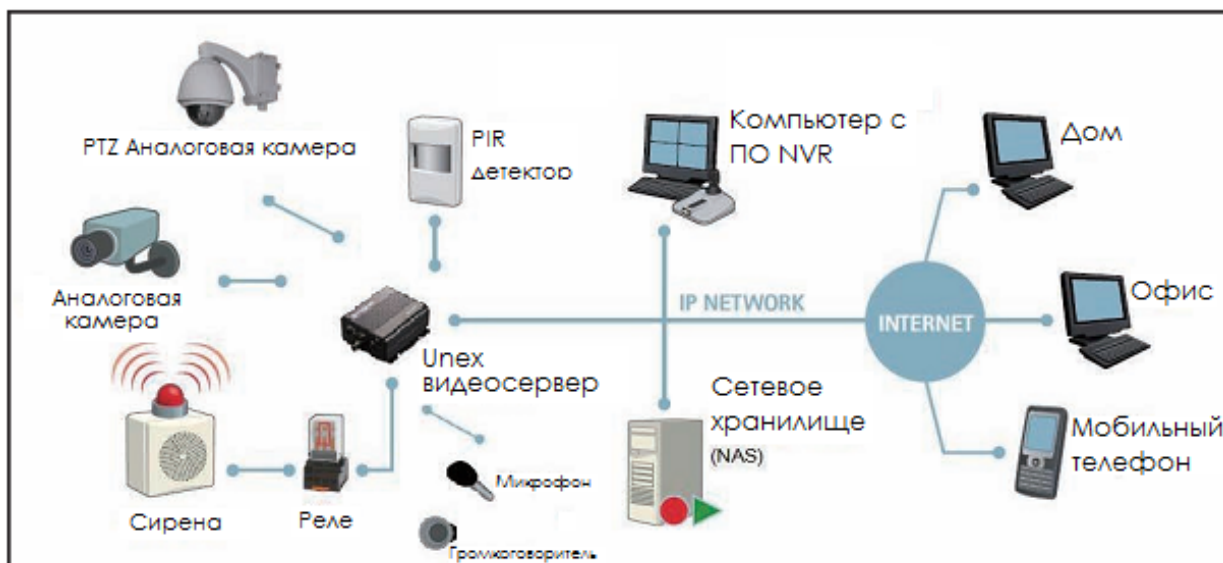
1	2
H.264	M-JPEG
H.264	MPEG-4
H.264	H.264
M-JPEG	MPEG-4
M-JPEG	H.264
M-JPEG	M-JPEG
MPEG-4	H.264
MPEG-4	M-JPEG
MPEG-4	MPEG-4

2, : 1

2.4



1. / ;
2. ;
3. ;
4. BNC ;
5. ;
6. RJ-45 Ethernet ;



3.1

- : Microsoft Windows 2000 XP
- Microsoft Internet Explorer . 6

: (Mozilla Firefox)

IPScan™

IPScan™ –

IP . IPScan™
Tool/IPScan.exe,

: E:\Scan
IPSurveillance.

3.2

IP

:
IP Ethernet UIP-E6250A /
cat. 5 RJ-45 . , ,
, IP .
/ :
/ ,
IP / .
!

Итого: 110-220
75 BNC

3.3

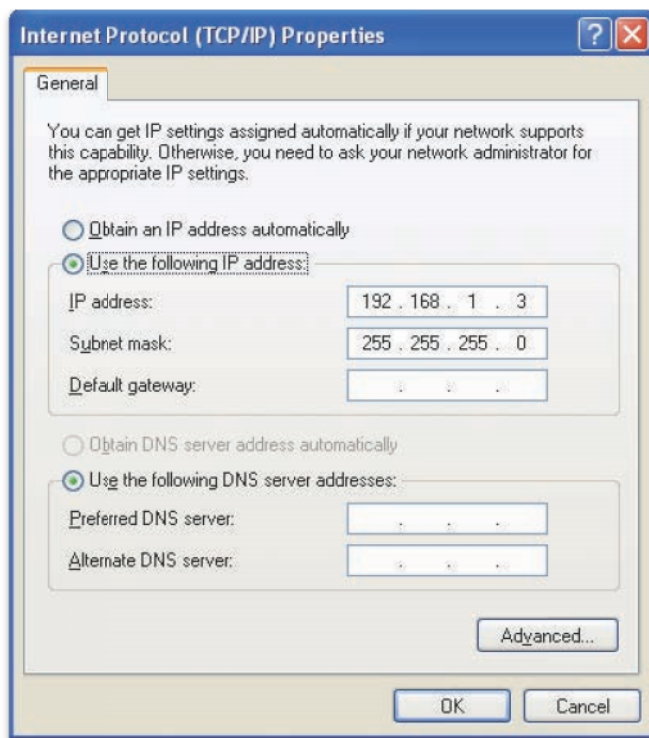
IP CD.

IP	192.168.1.2
	255.255.255.0
	192.168.1.1

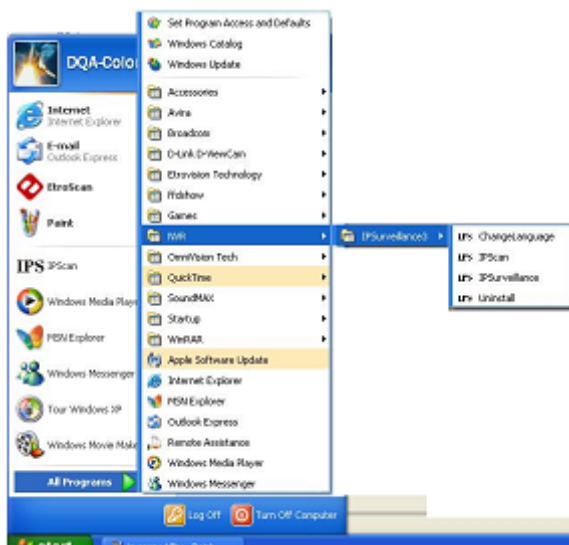
" " ()

IP 192.168.1.2. IP :

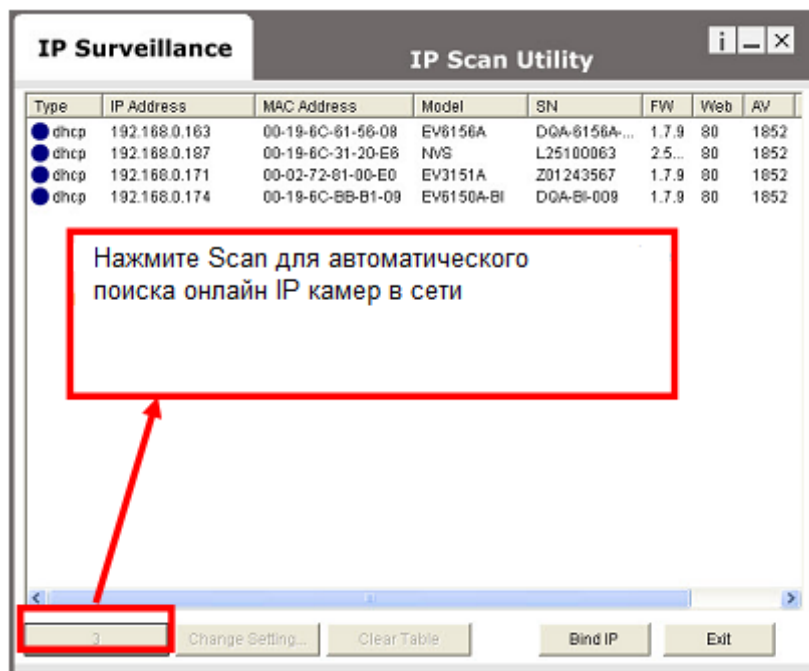
IP



IP IPScan™. IP
Unex IP
 IP



IPScan™



Scan

IP MAC

IP

MAC

MAC

Clear Table

Scan

IP 192.168.1.2.

IP



!

IPScan™

C IPScan™ :



- Change Setting ()



•



ID: root

Password: pass

45 . IP ;
IP -
IP -
DHCP, MAC

3.4 IP Web

1. IP MS Internet Explorer.
2. IP web ,
3. ActiveX.
MS Internet Explorer;
IP ;

: root
: pass

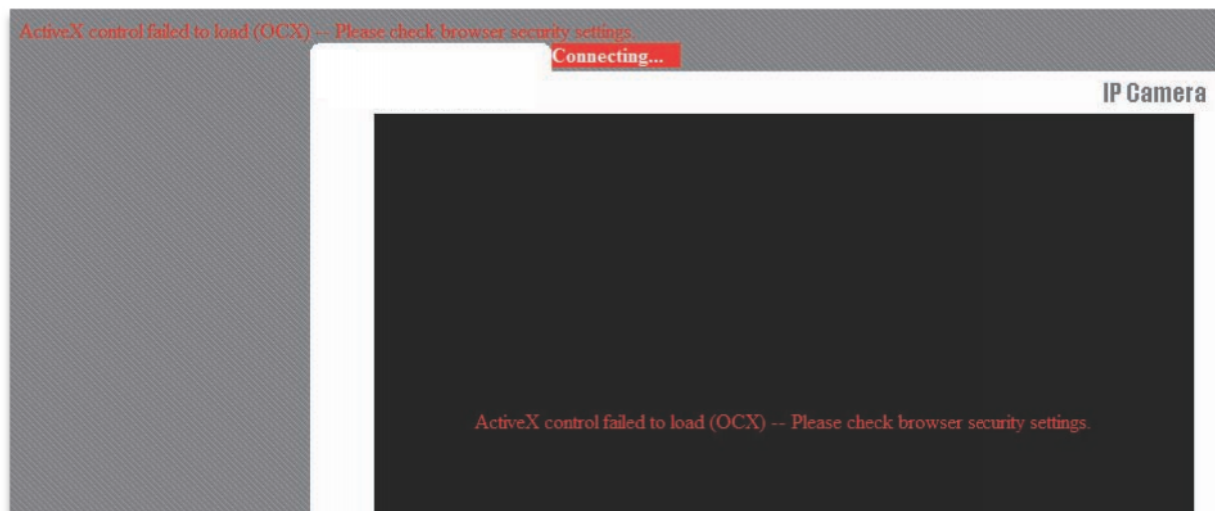
4.

!

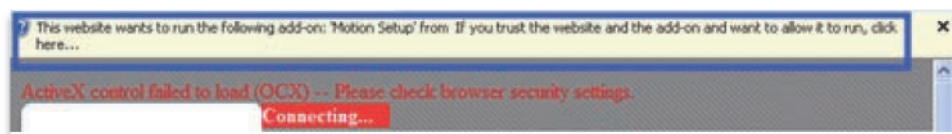
:



: “ActiveX control failed to load (OCX)”



ActiveX



Run Add –



Run ()



4

IPLINK™

USB

4.1

IP

1.

2.

3.

;

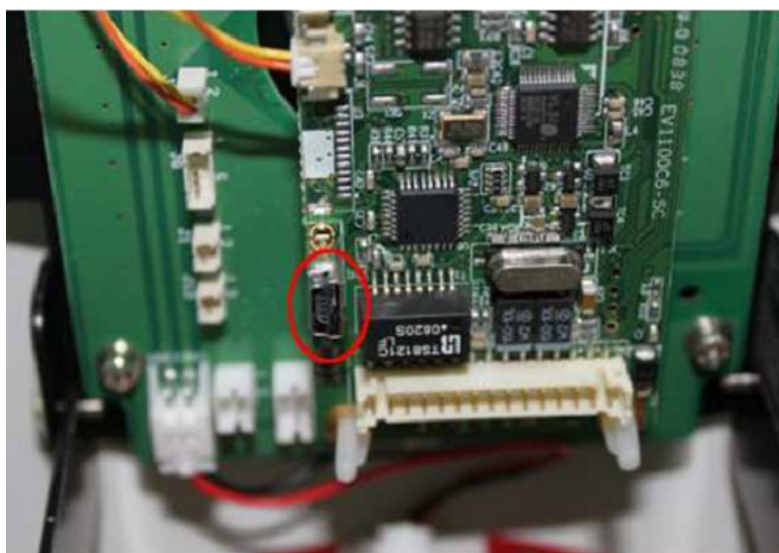
4.

;

5.

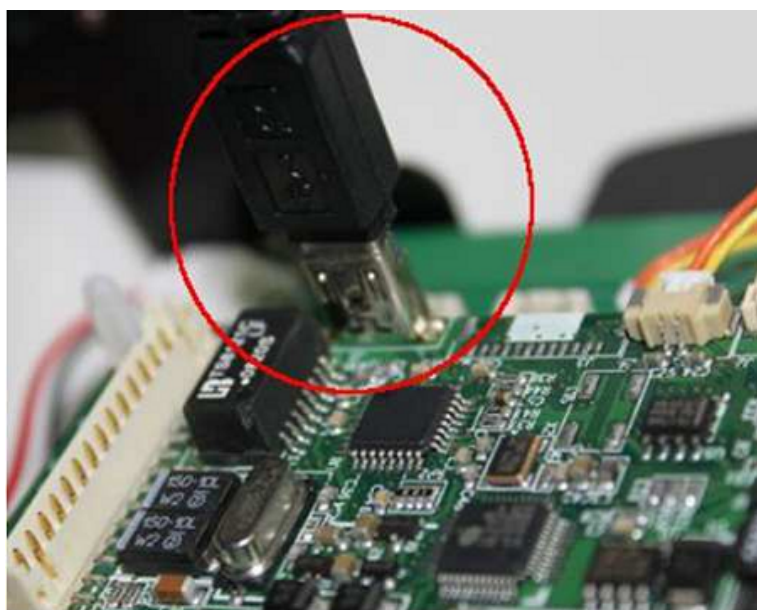
USB

;



6.

USB



IP

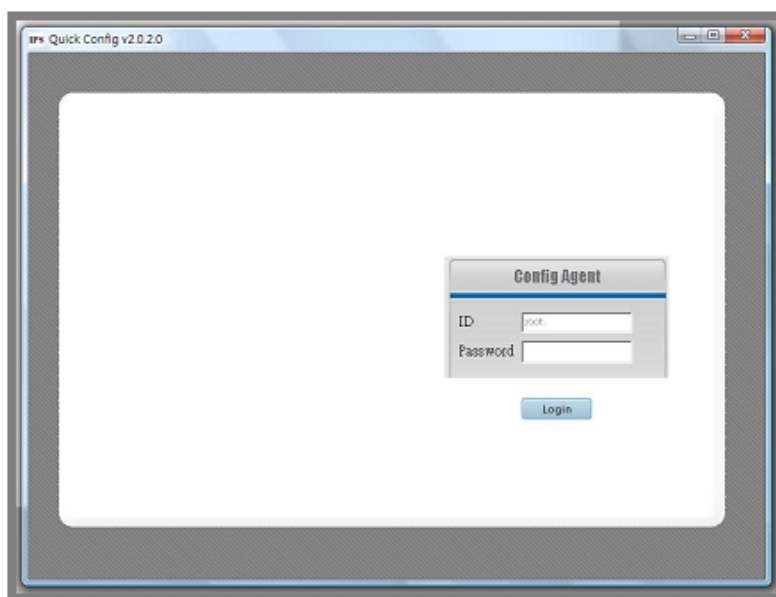
USB

Window

Config Wizard.



:



4.2

Quick Config (

)

:

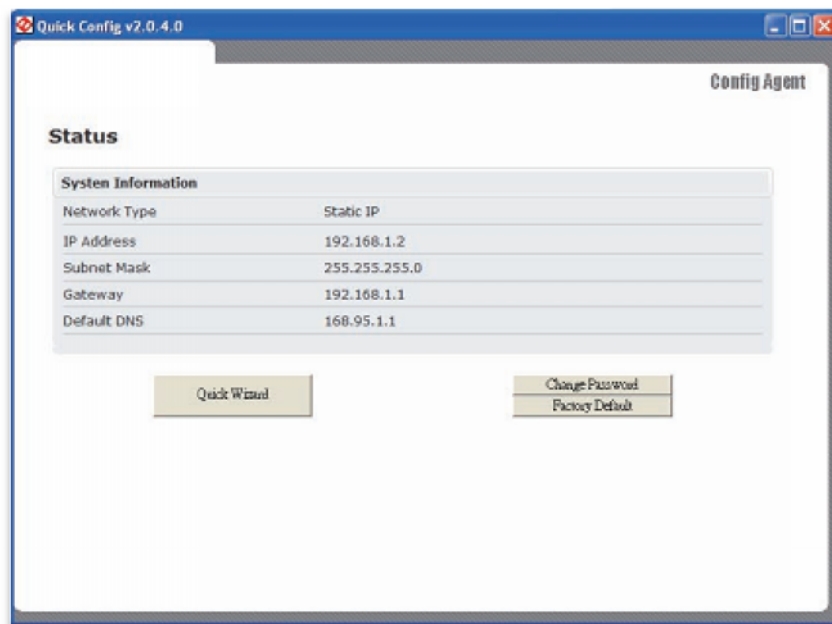
ID: root

: pass

:

Login.

:



Quick Wizard () – (Network)

DDNS.

1:



3 , : «Static IP», «DHCP», «PPPoE». Next.

2:

«Static IP»

Setup Wizard

[Network](#) [DDNS](#)

Step 2 : Setup up your network information

IP Address	<input type="text" value="192.168.1.2"/>
Subnet Mask	<input type="text" value="255.255.255.0"/>
Gateway	<input type="text" value="192.168.1.1"/>
Default DNS	<input type="text" value="168.95.1.1"/>

[Back](#) [Next](#)

«DHCP»

Setup Wizard

[Network](#) [DDNS](#)

Step 2 : DHCP Notice

Please make sure that you are installing this machine at a network with DHCP Service. Otherwise, it cannot get a proper IP address.

[Back](#) [Next](#)

: , IP DHCP ,

«PPPoE»

Setup Wizard

[Network](#) [DDNS](#)

Step 2 : Setup your PPPoE Information

User ID	<input type="text" value="pppoe_user"/>
User Password	<input type="password"/>
MTU	<input type="text" value="1412"/>
DNS Server	<input type="radio"/> Manual <input checked="" type="radio"/> Auto
DNS	<input type="text" value="168.95.1.1"/>

[Back](#) [Next](#)

Next.

3

, 3 4 .



Setup Wizard

Network **DDNS**

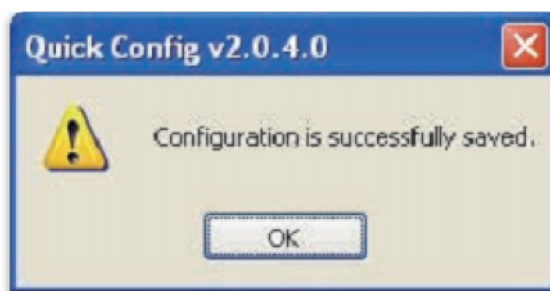
Step 3 : Port Information

Web Port: 80

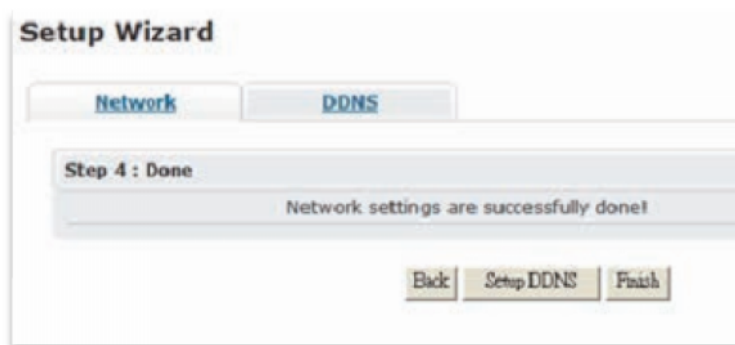
Stream Port: 1852

Back Next

Next.



4:



Setup Wizard

Network **DDNS**

Step 4 : Done

Network settings are successfully done!

Back Setup DDNS Finish

Setup DDNS

DDNS

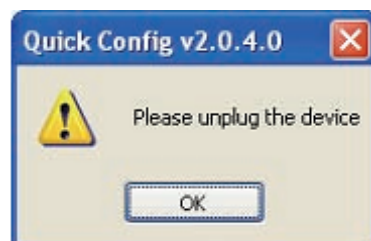
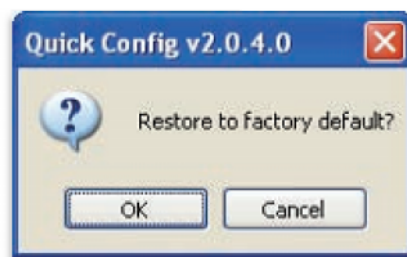
Finish

Quick Config Wizard.

4.3

Quick Config Withard
«Factory Default» «Status»

IP .



IP . IP -

IP : 192.168.1.2
: root
: pass

5

() 3

- :
- :
- :

:

1

IP : 192.168.1.2 : 5000
: 255.255.255.0 Web : 80
: 192.168.1.1 DHCP: OFF

2

1. IE

: ActiveX.
: IP ActiveX Control.
ActiveX Control IP
【Run】 【Save】 ActiveX.
“xdview.exe” ActiveX.
“Install OK!” ()

2.

IP IE
: “delete file” (), “delete all offline contents”
().

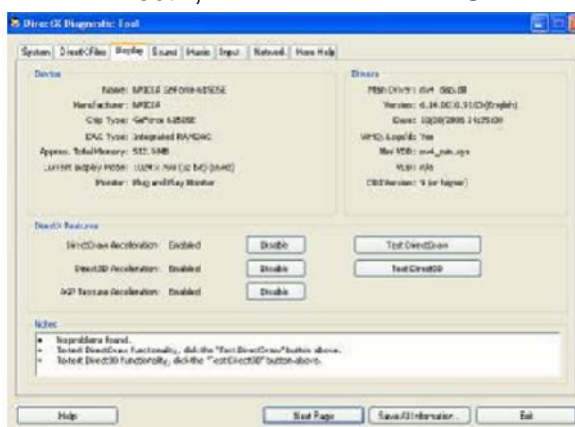
3.

1:
:
2:
:
3:
:

4.

IP IE
1:
:
2: IP
: IP , IP
IP
3: IP
: IP,
4:
: IP
5: - web

- 6:
- IP IP
5. ()
- config.exe, ActiveX (
- C:\Winnt\system32\Config.exe); EMS; IE
- IP
- 6.
- 1:
- 2: IP
- IP ,
7. NVS
- NVS
- 8.
- 1: , DirectX ;
- 2: ,
-)
- DirectX, "DXDIAG":



DirectDraw, Direct3D, AGP DirectX.

DirectX