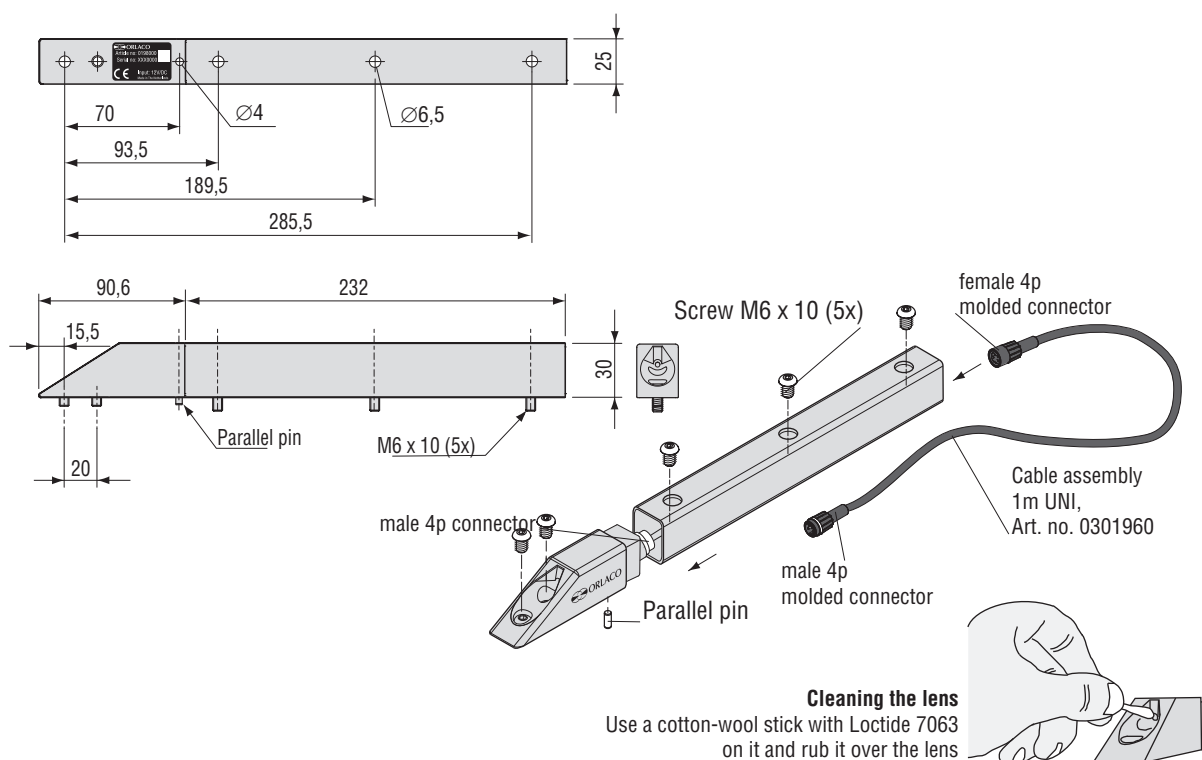


Product Data



Dimensions



TECHNICAL DATA

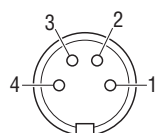
Right Forkcamera 51° No Led

Article number	Description 0198010
Lens-specifications	51° horizontal & 38° vertical.
CCD total pixels	542(H)x586(V).
T.V. System	PAL Standard, 1Vtt composite video into 75Ω.
Image sensor	Color 1/4 " C.C.D. (Charged Coupled Device).
Scanning system	625 lines, 50 fields/sec.
Light sensitivity	1 lux (f1,2).
Iris	Camera is equipped with electronic iris 1/50...1/120000 sec.
Lens opening	3,6 mm.
Type lens	Fixed focal, Min. object distance: 0,2 m.
Housing	Moulded stainless steel QS 304, grey; separated from electronics through galvanising.
Protection	IP69K according to IEC 60529.
Shock constancy	Shock and vibration resistant for usage on forks of forklift trucks, 50G shock test, and 15G random vibration test.
Weight	225 gr. without stainless steel protection pipe.
Lens glass	2 mm chemically hardened, toughened, tempered float glass 7 x stronger than ordinary glass.
Power input	Stabilised 12V/DC.
Power consumption	<+15°C: 3W & >+15°C: 1,2W (heating off).
Operating temperature	-40°C to +85°C.
Connection	4 p. male connector on camera.
Cable	1m cable (art. no: 0301960): 1 x Coax, 3 x Signal (7x0,13mm²) with total screening with 4 p. molded female connector and 1 molded male connector.
Approvals	EMC in compliance with 72/245EEC, 2006/28/EC.
Mounting	2 screws M6 x 10.

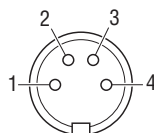
Electrical connection

Art. No 0301960 Cable 1m UNI

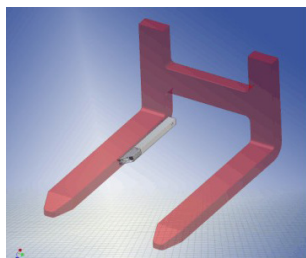
1 = Coax core	Video Signal
2 = Coax Shielding	Video GND
3 = Red	12V/DC
4 = Black	0V
Shielding	N.C.



Solder Side
Female connector



Solder Side
Male connector



Installation

Install the camera between the forks on the right side.

General practice in the forklift industry allows mounting on forks as long as the following rules are fulfilled:

- Only screw connections are allowed.
- Maximum thread is M6.
- Maximum drilling depth is 10 mm.
- Distance between the fork heel and the hole has to be more than 20% of fork length.
- Drilling has to be in the centre-line of the fork.

Orlaco is never liable for any damage of the forks or damage caused by malfunctioning forks for installations without the formal permission of the fork manufacturer.

IMPORTANT!: Any drilling in the fork must be first formally approved by the appropriate fork manufacturer.



All data subject to change without notice. All dimensions are for commercial purpose only.
The camera/display systems from Orlaco comply with the latest CE, ADR, EMC and mirror-directive regulations, where applicable.
All products are manufactured in accordance with the ISO 9001 quality management system, ISO/TS 16949 quality automotive, ISO 14001 environmental management systems and all Ex products with the IECEx scheme and ATEX directives, where applicable.

